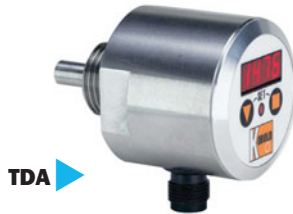


Kobold Digital Temperature Sensor

- Measuring Range -58 to 250°F
- Semiconductor Sensor
- Scalable 4-20mA Output
- Easy-to-Read LED Display
- All Stainless Steel Construction


TDA

SPECIFICATIONS

Display Type:	3-digit red LED
Display Resolution:	1° up to 212°F, 2° above 212°F
Accuracy:	14 to 185°F: ±1.0°F -58 to 14°F & 185 to 250°F: ±3.6°F
Switch Output:	Optional PNP or NPN Adjustable setpoint, hysteresis & delay (0.5-99.5s)
Pressure:	1150 PSIG max.
Temperature:	120°F max ambient, 250°F max process
Material:	316L Stainless Steel housing & probe
Remote Probe Cable:	Teflon, 8ft. std.
Power:	24 VDC ±20% @ 20 mA
Signal Output:	4-20 mA, 3-wire, 500Ω max. load
Sample Rate:	0.5 Sec./sample
Dampening:	Averaging 2, 4, 8, 16, 32, or 64 samples
Electrical Connection:	4-Pin M12 micro-DC male plug
Electrical Protection:	NEMA 4/IP 65

Programmable Features

- Lockout Code
- Dampening
- Transmitter Span

ORDERING INFORMATION

To Order: Insert Code for Each Letter to Select Catalog Number

 TDA -15 A B C D Example TDA-15N4F20L3M

A	Process Connection	
N4	1/2" NPT	N5 3/4" NPT
R4	1/2" BSPP (G 1/2)	R5 3/4" BSPP (G 3/4)
		D6 Remote Probe (Smooth Shank)
B	Measuring Range	
F2	0 to 250°F (not available with Remote Probe)	
H2	-20 to 120°C (not available with Remote Probe)	
F3	-58 to 250°F (only available with Remote Probe)	
H3	-50 to 125°C (only available with Remote Probe)	
C	Probe Length	
0	12mm / 1/2" (not Available with Remote Probe)	
1	100mm / 4"	
2	185mm / 7.25" (not Available with Remote Probe)	
D	Output	
L3M	4-20mA	
P3M	4-20mA + PNP switch (300mA max)	
N3M	4-20mA + NPN switch (300mA max)	

Kobold Magneto-Inductive Flowmeters

- Flow Rates from 0.26 GPM to 200 GPM
- Use with Conductive Liquids, Acids & Caustic
- No Moving Parts
- Digital Display Option
- Frequency or mA Output


MIK-C34

SPECIFICATIONS

Liquid:	Conductivity >30 μS/cm
Accuracy:	±2.0% of full scale
Repeatability:	±1% of full scale
Straight Pipe:	Requires 3X dia. upstream, 2X downstream
Operating Temp.:	32-176°F (140°F max. with PVC fittings)
Pressure:	145 PSIG max @ 70°F
Pressure Drop:	3.6 PSI max @ 100% rated flow
Electrical Protection:	NEMA 4X/IP 65
Power Supply:	24 VDC ±20% required
Connector:	Micro-DC male, 4-pin (5-pin on C34)
Frequency Output	PNP open collector, 200 mA max.
Analog Output	4-20 mA, 3-wire, 500Ω max.
Switch Output	PNP or NPN open collector, 300 mA max.

Compact electronic units (C34 Output Type) have a digital display and programmable switch setpoint, reset point, switch logic, 4-20 mA span/zero, dampening & lockout code. Set via 2-button keypad. Models with Integral Totalizer & Batch Controller electronics are also available.

ORDERING INFORMATION

 MIK- A B C D Example MIK-5NAU4NL343

A	Body Material				
5NA	Ryton with Buna-N Seal, 316L Electrode				
5VA	Ryton with FKM Seal, 316L Electrode				
6FC	PVDF with FFKM Seal, Hastelloy C4 Electrode				
B	Range				
	Fitting Set Size (")				
	GPM	N	P	M	R
U1	0.013-0.26				
U2	0.04-0.8	1/4	1/2	--	1/2
U4	0.13-2.6				
U5	0.2-4.0	3/8	3/4	3/8	1/2
U7	0.4-8.0				
U8	0.65-13	1/2	1	1/2	1
UA	0.8-16				
UB	1.3-26	1	--	1	1-1/2
UD	2.0-40				
UE	4.0-80	1-1/2	--	1-1/2	2
UG	6.5-130				
UH	9.0-180	2	--	2	2-3/4
C	Fitting Set*				
N	NPT female PVC				
P	PVC hose barb				
M	PVC glue socket				
R	NPT female polypropylene				
D	Output				
F300	Frequency 0-500Hz				
F390	User Specified 50-1000Hz full scale				
L343	4-20mA				
C34N	4-20mA & NPN switch, open collector				
C34P	4-20mA & PNP switch, open collector				

* PVDF butt weld tube also available for some ranges.