

CURRENT TRANSFORMERS

Model 20 - Wound Primary

Model 20X - Auxiliary Transformer

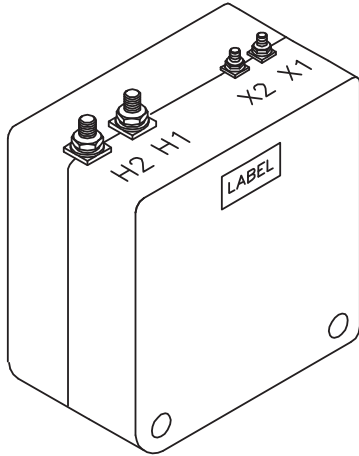
Insulation Level
Model 20 Wound
Primary:
0.6 kV BIL 10KV full wave

Continuous Thermal Current
Rating Factor:
1.33 at 30°C amb., 1.0 at 55°C amb.

- Terminals are brass studs No. 8 - 32 with one flatwasher, lockwasher and regular nut, for ratios up to 25:5 & 1/4-20 studs for higher ratios.
- Order Mounting Bracket Kit No. I
- Approximate weight: 8 lbs.



E228202



Model 20

The Model 20 is a low ratio wound primary current transformer, suitable for primary currents up to 50 amperes. It is rated for metering and relaying applications. The table below lists the most common current ratings. Other ratios are available.

CATALOG NUMBER	VA FOR 1% CLASS	RELAY CLASS	ANSI METERING CLASS AT 60 Hz				
			B0.1	B0.2	B0.5	B0.9	B1.8
20-2-XXX	25.0	T10	0.3	0.3	0.6	1.2	2.4
20-4-XXX	125	T20	0.3	0.3	0.3	0.3	0.3

RATIO	1:5	2.5:5	5:5	7.5:5	10:5	15:5	20:5	25:5	30:5	40:5	50:5
SUFFIX	001	0025	005	0075	010	015	020	025	030	040	050

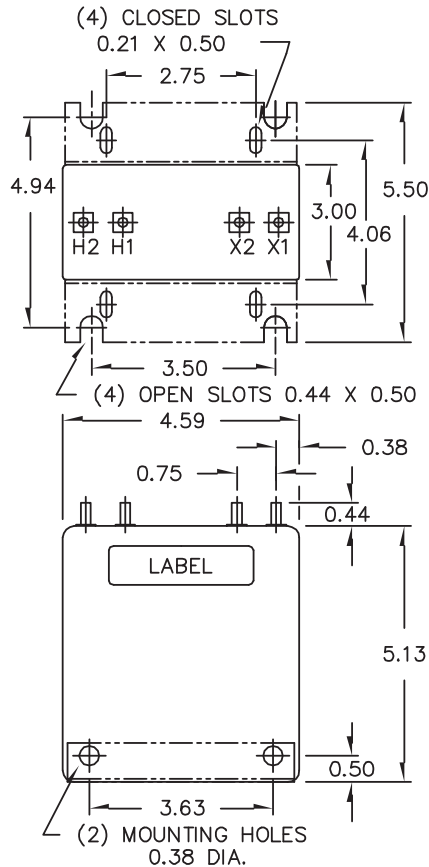
* 1/4-20 stud terminals.

Model 20X

ANSI Metering Class: 0.3 B1.8

The Model 20X is an auxiliary transformer for use in the secondary of main current transformers to change the ratio for metering applications.

Since the Model 20X is used in the secondary of another current transformer it has no voltage rating. It is given a 2500 volt 60 Hz high potential test. It is designed to be used on circuits not to exceed 600 volts to ground or between windings.



CATALOG NUMBER	CURRENT RATIO
20X0100	5:0.100
20X0200	5:0.200
20X0250	5:0.250
20X0500	5:0.500
20X0625	5:0.625
20X1000	5:1.000
20X1250	5:1.250
20X1667	5:1.667
20X2000	5:2.000
20X2395	5:2.395
20X2500	5:2.500
20X2890	5:2.890
20X3000	5:3.000
20X3330	5:3.330
20X3750	5:3.750
20X4000	5:4.000
20X5000	5:5.000
20X5330	5:5.330

CATALOG NUMBER	CURRENT RATIO
20X6250	5:6.250
20X7500	5:7.500
20X8000	5:8.000
20X10000	5:10.000
20X12500	5:12.500
20X15000	5:15.000
20X1500-5	1.500:5
20X1667-5	1.667:5
20X2500-5	2.500:5
20X2875-5	2.875:5
20X7500-5	7.500:5
20X10500-5	10.500:5
20X0500-1	0.500:1
20X0923-1	0.923:1
20X0400-10	0.400:10
20XSUM-2 **	5+5:5
20XSUM-3 **	5+5+5:5
20XSUM-4 **	5+5+5+5:5
20XSUM-5 **	5+5+5+5+5:5

** The circuits of up to five secondaries may be totalized. Equal or unequal line current transformers can be summed with this transformer. Advise the ratios of the line current transformers to be totalized. Output terminals are X1-X2.

CURRENT TRANSFORMERS

Model 190 - Wound Primary

Model 190X - Auxiliary Transformer

Frequency:
50 - 400 Hz

Insulation Level:
600 Volts, 10 kv BIL full wave

Continuous Thermal Current Rating Factor:
1.33 at 30°C amb., 1.0 at 55°C amb.

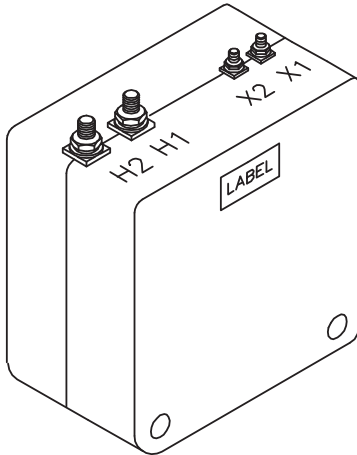
- Terminals are brass studs No. 8 - 32 with one flat-washer and regular nut, for ratios up to 25:5 and 1/4 - 20 studs for higher ratios

- Order Mounting Bracket Kit No. J

- Approximate weight: 4 lbs.



E228202



MODEL 190

The Model 190 is a low ratio wound primary current transformer, suitable for primary currents up to 50 amperes. The table below lists the most common current ratings.

CATALOG NUMBER	VA FOR 1% CLASS	ANSI METERING CLASS AT 60 Hz				
		B0.1	B0.2	B0.5	B0.9	B1.8
190-2-XXX	12.5	0.6	0.6	1.2	2.4	-
190-4-XXX	30.0	0.3	0.3	0.3	0.6	1.2

RATIO	1:5	2.5:5	5:5	7.5:5	10:5	15:5	20:5	25:5	30:5	40:5	50:5
SUFFIX	001	0025	005	0075	010	015	020	025	030	040	050

* * *

* 1/4-20 stud terminals.

MODEL 190X

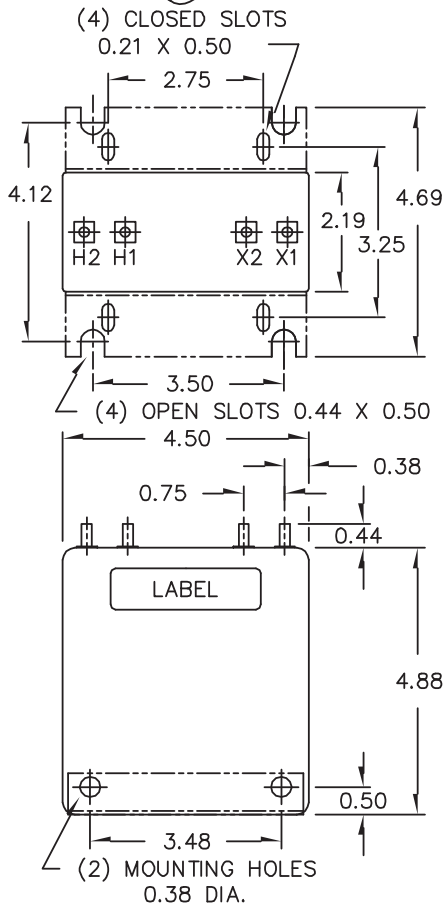
ANSI Metering Class: 0.3 B0.5

The Model 190X is an auxiliary transformer for use in the secondary of main current transformers to change the ratio for metering applications. Since the Model 190X is used in the secondary of another current transformer it has no voltage rating. It is given a 2500 volt 60 Hz high potential test. It is designed to be used on circuits not to exceed 600 volts to ground or between windings.

CATALOG NUMBER	CURRENT RATIO
190X0100	5:0.100
190X0200	5:0.200
190X0250	5:0.250
190X0500	5:0.500
190X0625	5:0.625
190X1000	5:1.000
190X1250	5:1.250
190X1667	5:1.667
190X2000	5:2.000
190X2395	5:2.395
190X2500	5:2.500
190X2890	5:2.890
190X3000	5:3.000
190X3330	5:3.330
190X3750	5:3.750
190X4000	5:4.000
190X5000	5:5.000
190X5330	5:5.330

CATALOG NUMBER	CURRENT RATIO
190X6250	5:6.250
190X7500	5:7.500
190X8000	5:8.000
190X10000	5:10.000
190X12500	5:12.500
190X15000	5:15.000
190X1500-5	1.500:5
190X1667-5	1.667:5
190X2500-5	2.500:5
190X2875-5	2.875:5
190X7500-5	7.500:5
190X10500-5	10.500:5
190X0500-1	0.500:1
190X0923-1	0.923:1
190X0400-10	0.400:10
190XSUM-2 **	5+5:5
190XSUM-3 **	5+5+5:5
190XSUM-4 **	5+5+5+5:5
190XSUM-5 **	5+5+5+5+5:5

** The circuits of up to five secondaries may be totalized. Equal or unequal line current transformers can be summed with this transformer. Advise the ratios of the line current transformers to be totalized. Output terminals are X1-X2.



CURRENT TRANSFORMER

Model 189 - Wound Primary

Application:
Ammeters and wattmeters

Frequency:
50 - 400 Hz

Insulation Level:
0.6 kV, BIL 10kV full wave

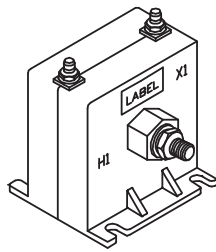
Continuous Thermal Current Rating Factor:
1.33 at 30°C amb., 1.0 at 55°C amb.

- Secondary terminals are brass studs No. 8 - 32 UNC with one flatwasher, lockwasher and regular nut.
- Approximate weight: 0.75 lbs.

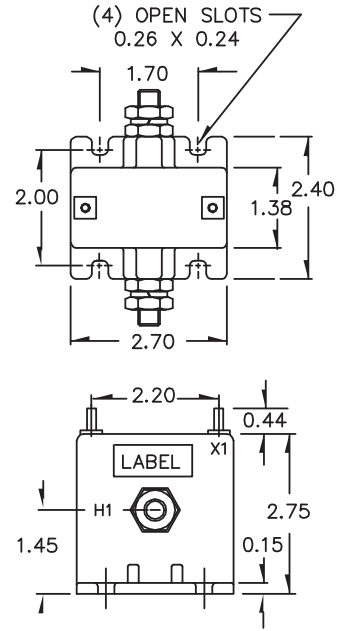
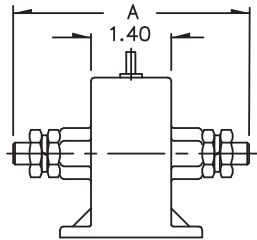


E228202

The Model 189 is a low ratio wound primary current transformer, suitable for primary currents up to 100 amperes. The table below lists the most common current ratings. Primary terminals for the Model 189 for ratios of 30:5 and below are No.10-32 brass screws with one lockwasher (Dimension A=3.28), for ratios 40:5 and above, 3/8-16 brass studs with one lockwasher and regular nut (Dimension A=4.10).



MODEL 189



CATALOG NUMBER	CURRENT RATIO	ANSI METERING CLASS AT 60 Hz	
		B0.1	B0.2
189-0025	2.5: 5	0.6	0.6
189-005	5: 5	0.6	0.6
189-0075	7.5: 5	0.6	0.6
189-010	10: 5	0.6	0.6
189-015	15: 5	0.6	0.6
189-020	20: 5	0.6	0.6
189-025	25: 5	0.6	0.6
189-030	30: 5	0.6	0.6
189-040	40: 5	0.6	0.6
189-050	50: 5	0.6	0.6
189-060	60: 5	0.6	0.6
189-075	75: 5	0.6	0.6
189-080	80: 5	0.6	0.6
189-101	100: 5	0.6	0.6