



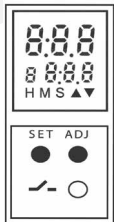
# Timing Control Made Easy

## 7954 and 7957 Multi-function time relays

Versatile and easy to program

### Programmable DIN Rail Time Relay

UL, cUL and CE, rated    US



Digital accuracy, easy to read display

**MULTIPLE**  
timing ranges

up to **18**  
selectable  
timing functions



Screw terminals  
for up to 14AWG wire

Snap in DIN rail  
mounting



Form C SPDT  
8 AMP relay



Output status  
indicator



Only  
17mm  
wide

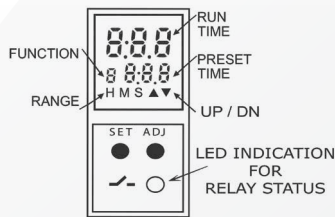
Trumeter's new range of digital time relays offer 8 or 18 operating modes, easily configured on the 3 digit LCD display; a wide range of 0.1s - 999Hr to suit all applications; a clear indication of the relay status via the front panel LED; can accept a wide range of operating voltages for most installations. The keylock feature means settings cannot be tampered with, for 100% reliable operation.

## Key Features

### Features

- Compact 17.5mm wide DIN rail mountable
- 3 digit LCD for easy programming and run time indication
- Tamper proof with key lock feature
- Wide timing range: 0.1s - 999Hr
- Multi-function: 8 (7954) or 18 (7957) selectable operating modes
- Universal Voltage: 24 - 240VAC/VDC
- Option to select up/down timing
- CE, UL & cUL approved
- 8 AMP Form C (SPDT) Relay outputs

### Programmable:



- Preset Time: The Timer Duration selected by the user
- Run Time: In Down counting ▼ mode it indicates the time remaining, while in Up counting ▲ mode indicates the elapsed time.
- Default Mode: Down counting ▼
- Up/Down ▼▲ blinks during the Timer Duration (T)

### Specifications:

- Input voltage range
- Relay Capability
- Temp range
- Time ranges

### Part Numbers

7954 8 Functions  
7957 18 Functions

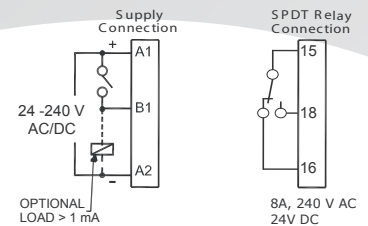
### Operating modes

#### 7957

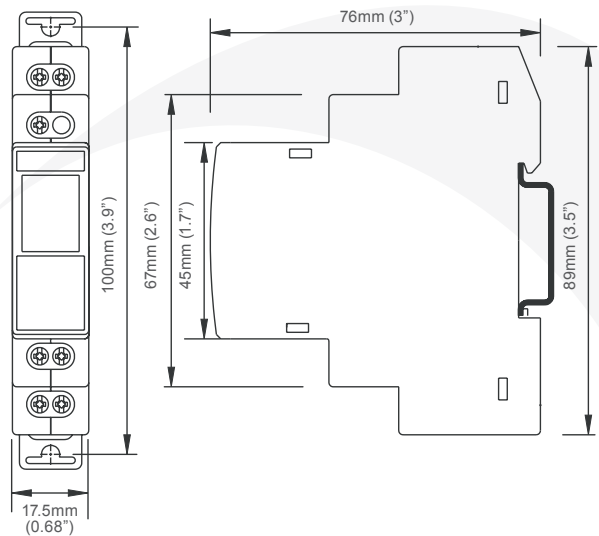
- ON Delay
- Repeat Cycle OFF/ON
- Repeat Cycle ON/OFF
- Impulse on Power Up
- Accumulative Delay on Signal
- Accumulative Delay on Inverted Signal
- Accumulative Impulse on Signal
- Signal ON Delay
- Inverted Signal ON Delay
- Signal OFF Delay
- Impulse ON/OFF
- Signal OFF/ON
- Leading Edge Impulse 1
- Leading Edge Impulse 2
- Trailing Edge Impulse 1
- Trailing Edge Impulse 2
- Delayed Impulse
- Inverted Signal ON Delay (Type 2)

#### 7954

- ON Delay
- Repeat Cycle OFF/ON
- Repeat Cycle ON/OFF
- Signal ON/OFF
- Signal OFF Delay
- Interval
- Signal OFF/ON
- One Shot Output



## Easy To Program & Install



Full specifications available online [www.trumeter.com](http://www.trumeter.com)

