

# Simple Logger® II

## 4-Channel, TRMS, 600V<sub>AC</sub>/DC

### Model L264

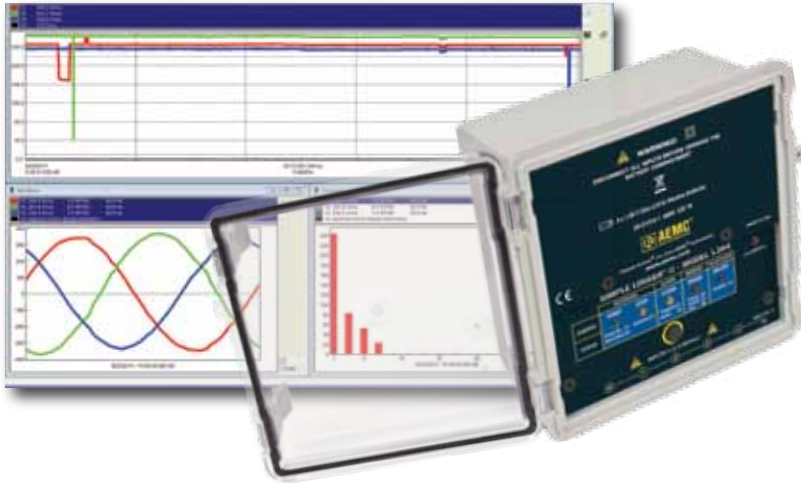
Authorized Distributor:

**WESCHLER INSTRUMENTS**

phone: 800-903-9870 440-378-6580

fax: 800-903-9590 440-238-0660

www.weschler.com info@weschler.com



## SPECIFICATIONS

MODEL	L264
<b>ELECTRICAL</b>	
Channels	Four
Input Connection	Five recessed banana jacks
Input Range	0 to 600V <sub>AC</sub> /DC
Accuracy (50/60Hz)	0 to 5V unspecified 5 to 50V: ±(0.5% of Reading + 1V) 50 to 600V: ±(0.5% of Reading + 0.5V)
Input Impedance	16MΩ
Sample Rate	64 samples/cycle
Storage Rate	Programmable from 125ms to 1 per day
Storage Modes	Stop when full, FIFO, Extended Recording Mode (XRM™) and Store on Alarm
Recording Length	15 minutes to 8 weeks, programmable using DataView®
Memory	1,000,000 measurements (2MB). The recorded data is stored in non-volatile memory and will be retained even if the battery is low or removed.
Communication	Bluetooth (Class 2)
Power Source	4 x 1.5V C-cell Alkaline batteries (included)
Battery Life	Up to 180 days (dependent on storage rate/recording length)
<b>MECHANICAL</b>	
Dimensions	5.904 x 5.904 x 3.568" (150 x 150 x 91mm)
Weight (with battery)	2.1 lbs (0.95kg)
Case	UL94-V0
Vibration	IEC 68-2-6 (1.5mm, 10 to 55Hz)
Shock	IEC 68-2-27 (30G)
Drop	IEC 68-2-32 (1m)

## FEATURES

- ▶ TRMS voltage recording up to 600V<sub>AC</sub>/DC
- ▶ 64 samples per cycle
- ▶ Programmable storage rates from 8 per second to 1 every day
- ▶ 4 user selectable storage modes
- ▶ Stores up to 1,000,000 measurements in non-volatile memory
- ▶ Up to 180 days of operation from standard Alkaline batteries
- ▶ Lightweight, compact, fits anywhere
- ▶ 6 LED indicators quickly and clearly display logger status
- ▶ Includes DataView® software FREE for data storage, real-time waveform display, analysis and report generation
- ▶ Wireless Bluetooth data communication
- ▶ Safety Ratings 600 CAT IV; 1000V CAT III

## APPLICATIONS

- ▶ Single/split phase and poly phase voltage monitoring
- ▶ Neutral and ground voltage monitoring
- ▶ Intermittent problem detection
- ▶ Harmonic voltage monitoring using DataView® software
- ▶ Residential power monitoring
- ▶ DC Voltage Monitoring



Model L264 input connections

### DESCRIPTION

Simple Logger® II Model L264 (4-Channel, TRMS, Bluetooth, 600V<sub>AC</sub>/DC)

### CATALOG NO.

2126.23

Technical Assistance (800) 343-1391



# DataView<sup>®</sup>

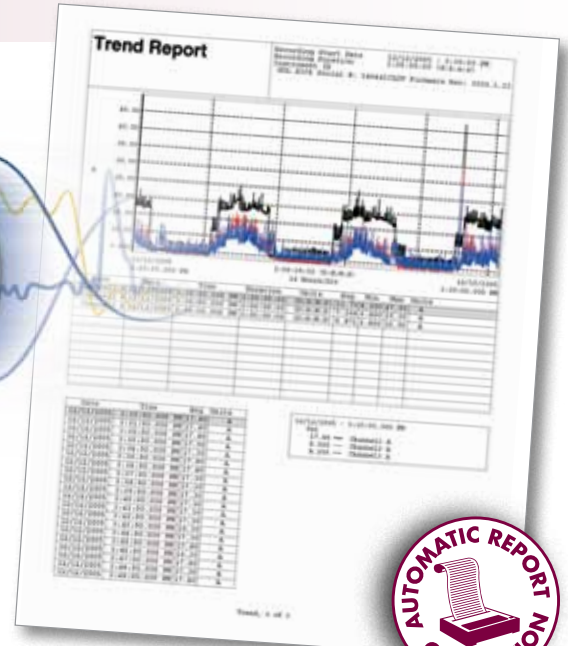
## Data Analysis and Reporting Software for Data Loggers

### Configure all data logger functions of the Simple Logger II Models

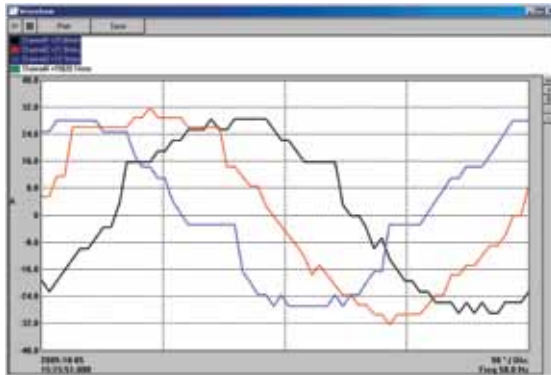
- Display and analyze real-time data on your PC
- Configure all data logger functions and parameters from your PC including sample rate, recording length, channel configuration and more
- Create and store a complete library of configurations that can be uploaded to the logger as needed
- Zoom in and out and pan through sections of the graph to analyze the data
- Download, display and analyze recorded data
- Display waveforms, trend graphs, harmonics (AC models) and text summaries
- Create custom views and reports
- Print reports using standard or custom templates you design
- Free software upgrades are available on our website [www.aemc.com](http://www.aemc.com)



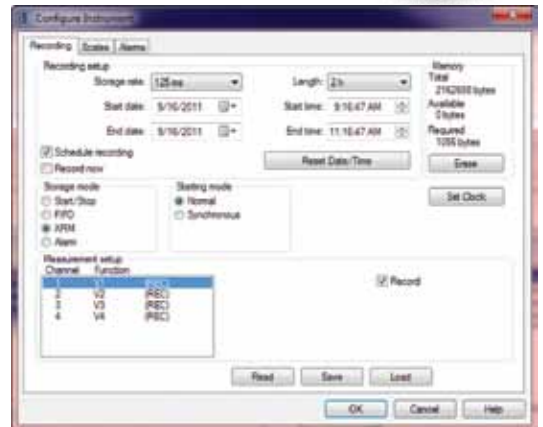
DataView<sup>®</sup> is included with all Simple Logger II Models.



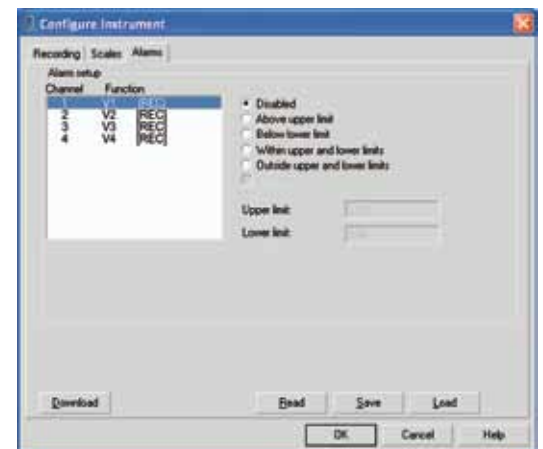
Real-time view of trend, waveform and status screens.



Real time display of all active inputs on computer through DataView<sup>®</sup> software.



Quick and simple configuration of all functions and settings from one dialog box.



Configure all alarm functions with straightforward selections.