

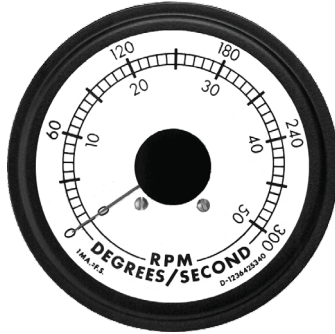


250 Degree Series

Analog Panel Meters



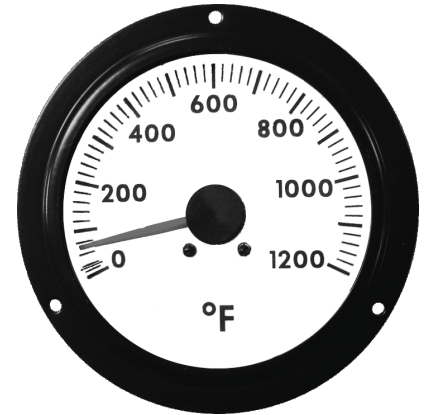
250-20



250-30



250-375



250-45

FEATURES

■ The Hoyt 250° meters utilize a highly damped, spring loaded pivot and jewel movement; mechanically interlocked, negating the use of adhesives and develops a very high torque. The meters are desirable for the following applications:

- Emergency Vehicles
- Marine Instrumentation
- Speed (RPM)
- Pressure and Flow
- Pyrometers
- Diesel and Gas Instrumentations

- Special ranges and resistances to match your equipment design.
- Electrical damping to control overshoot and oscillation.
- Optional custom dials with your name, logo, etc.
- Long 250 degree pointer swing.
- Pivot and jewel movement.
- Three sizes available for your application.
- Now available with or without illumination.
- Available with chrome or black bezels.
- 1 year limited warranty.
- High impact metal case.
- Color fast metal dials.
- DC moving coil movement.
- 1% & 2% accuracy available.

SPECIFICATIONS

#10 terminals standard, 1/4-28 available.
 250 degree pointer deflection DC.
 Iron case standard.
 Brass case available (extra cost).

METER TYPES AVAILABLE:

- DC:**
- Microammeters
 - Milliammeters
 - Ammeters
 - Millivoltmeters
 - Voltmeters
 - Pyrometers
 - Custom gauges

HOW TO ORDER

1. To order the Hoyt 250 degree series meter, use the appropriate ranges from the price sheet. Select part number 250-20 for 2" meters, select part number 250-30 for 3" meters, 250-375 for 3-3/8" meter.
2. Decide which bezel option is required and add to - _____.
3. Use "I" for Illuminated and "N" for Non-illuminated.
4. Add range and scale from price list as examples below.

Example: 250-375, CHROME, 4-20 MADC SPECIAL dial D-1292325

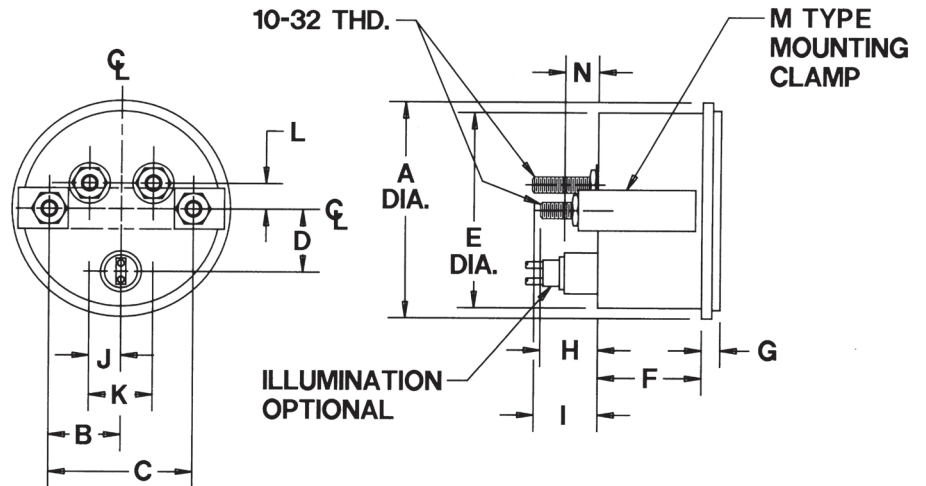
Our policy is one of continuous development and we reserve the right to supply products different in design and appearance from those described. As development is continuous, we reserve the right to alter specifications without notice.



250 Degree Series

Analog Panel Meters

DIMENSIONS



MODELS	A	B	C	D	E	F	G	H	I	J	K	L	M	N
250-20	2.29	0.48	0.97	-.56	2.05	1.51	0.26	0.00	1.00	0.48	0.97	0.00	"U"	0.51
250-30	3.32	1.09	2.18	1.03	3.00	1.65	0.28	0.78	0.94	0.48	0.97	0.63	"L"	0.00
250-375	3.80	1.31	2.62	1.12	3.36	1.63	0.38	0.78	0.94	0.48	0.97	0.65	"L"	0.00
250-45	-	1.47	2.94	1.38	-	1.80	-	-	0.94	0.48	0.97	0.63	"L"	0.00

*250-45-For Case Style & omitted dimensions, refer to Model 574, Industrial Metal Cases

BEZELS AVAILABLE



Type C



Type F



Type S



Type P



Type K

MODELS	C	F	S	P	K
17/3	-	0	X	-	X
250-20	-	X	X	-	0
250-30	X	0	X	X	-
570	X	0	X	X	-
250-375	-	-	-	0	-

0 = STANDARD TOPS (BLACK)

X = SPECIAL TOPS (EXTRA COST)

OPTIONAL MATERIALS AND FINISH AVAILABLE (EXTRA COST)