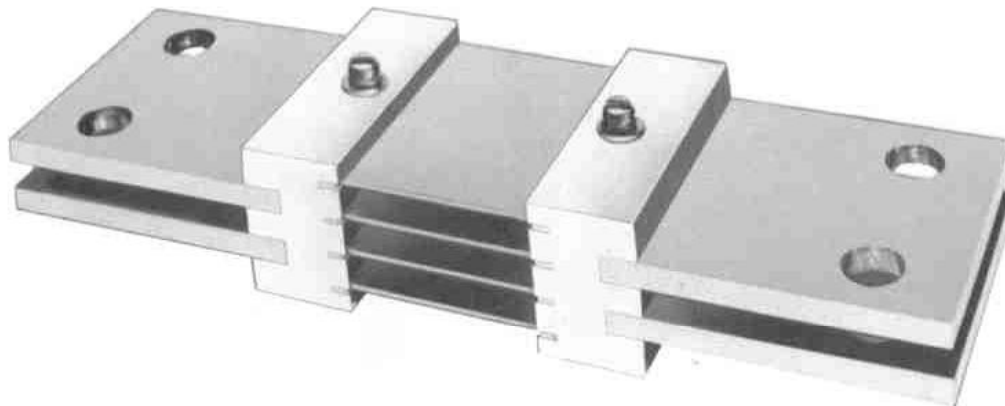


# TYPE C • DC Ammeter Shunt

50MV 1000 through 2000 amperes  
 100MV 1000 through 2000 amperes



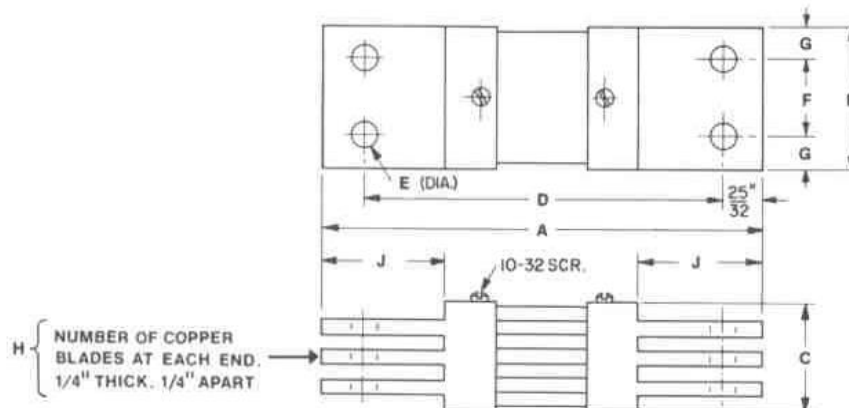
## 50 MV

Catalog Number	AMP	A	B	C	D	E	F	G	H	J
C-1000-50	1000	9 <sup>1</sup> / <sub>16</sub>	2 <sup>5</sup> / <sub>8</sub>	1 <sup>1</sup> / <sub>2</sub>	7 <sup>1</sup> / <sub>2</sub>	17/32	1 <sup>1</sup> / <sub>2</sub>	9/16	2	2 <sup>5</sup> / <sub>8</sub>
C-1200-50	1200	9 <sup>1</sup> / <sub>16</sub>	3	1 <sup>1</sup> / <sub>2</sub>	7 <sup>1</sup> / <sub>2</sub>	17/32	1 <sup>1</sup> / <sub>2</sub>	3/4	2	2 <sup>5</sup> / <sub>8</sub>
C-1500-50	1500	9 <sup>1</sup> / <sub>16</sub>	3	1 <sup>1</sup> / <sub>2</sub>	7 <sup>1</sup> / <sub>2</sub>	17/32	1 <sup>1</sup> / <sub>2</sub>	3/4	2	2 <sup>5</sup> / <sub>8</sub>
C-2000-50	2000	9 <sup>1</sup> / <sub>16</sub>	3 <sup>1</sup> / <sub>4</sub>	2	7 <sup>1</sup> / <sub>2</sub>	17/32	2	5/8	3	2 <sup>5</sup> / <sub>8</sub>

## 100 MV

C-1000-100	1000	10 <sup>7</sup> / <sub>8</sub>	2 <sup>5</sup> / <sub>8</sub>	1 <sup>1</sup> / <sub>2</sub>	9 <sup>5</sup> / <sub>16</sub>	17/32	1 <sup>1</sup> / <sub>2</sub>	9/16	2	2 <sup>5</sup> / <sub>8</sub>
C-1200-100	1200	10 <sup>7</sup> / <sub>8</sub>	3	1 <sup>1</sup> / <sub>2</sub>	9 <sup>5</sup> / <sub>16</sub>	17/32	1 <sup>1</sup> / <sub>2</sub>	3/4	2	2 <sup>5</sup> / <sub>8</sub>
C-1500-100	1500	10 <sup>7</sup> / <sub>8</sub>	3	1 <sup>1</sup> / <sub>2</sub>	9 <sup>5</sup> / <sub>16</sub>	17/32	1 <sup>1</sup> / <sub>2</sub>	3/4	2	2 <sup>5</sup> / <sub>8</sub>
C-2000-100	2000	10 <sup>7</sup> / <sub>8</sub>	3 <sup>1</sup> / <sub>4</sub>	2	9 <sup>5</sup> / <sub>16</sub>	17/32	2	5/8	3	2 <sup>5</sup> / <sub>8</sub>

DIMENSIONS in inches. TOLERANCES ±.015 for hole diameters. Other tolerances ±.030 unless otherwise noted.



**EMPRO MANUFACTURING CO., INC.** ..... BOX 26064 • INDIANAPOLIS, IN 46226  
 PHONE (317) 823-4478

