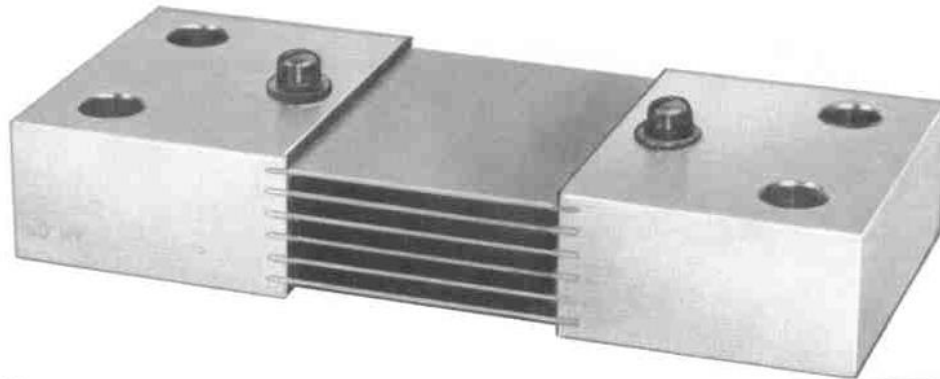


# TYPE B • DC Ammeter Shunt

50MV 300 through 1200 amperes  
100MV 300 through 1200 amperes



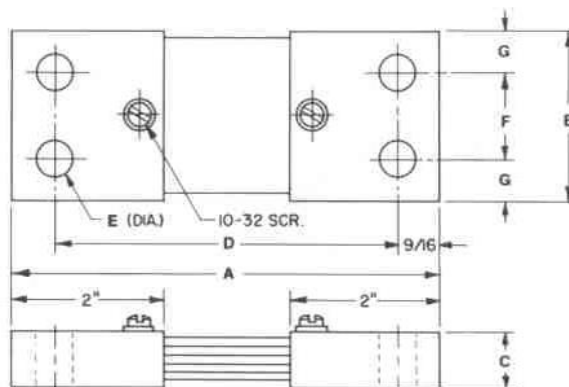
## 50 MV

Catalog Number	AMP	A	B	C	D	E	F	G
B-300-50	300	5 <sup>7</sup> / <sub>8</sub>	1 <sup>3</sup> / <sub>4</sub>	1/2	4 <sup>3</sup> / <sub>4</sub>	7/16	1	3/8
B-400-50	400	5 <sup>7</sup> / <sub>8</sub>	2	3/4	4 <sup>3</sup> / <sub>4</sub>	7/16	1 1/4	3/8
B-500-50	500	5 <sup>7</sup> / <sub>8</sub>	2	3/4	4 <sup>3</sup> / <sub>4</sub>	7/16	1 1/4	3/8
B-600-50	600	5 <sup>7</sup> / <sub>8</sub>	2	3/4	4 <sup>3</sup> / <sub>4</sub>	7/16	1 1/4	3/8
B-750-50	750	5 <sup>7</sup> / <sub>8</sub>	2 1/4	3/4	4 <sup>3</sup> / <sub>4</sub>	7/16	1 1/2	3/8
B-800-50	800	5 <sup>7</sup> / <sub>8</sub>	2 3/8	3/4	4 <sup>3</sup> / <sub>4</sub>	7/16	1 1/2	7/16
B-1000-50	1000	5 <sup>7</sup> / <sub>8</sub>	2 1/2	1	4 <sup>3</sup> / <sub>4</sub>	7/16	1 1/2	1/2
B-1200-50	1200	5 <sup>7</sup> / <sub>8</sub>	2 7/8	1	4 <sup>3</sup> / <sub>4</sub>	7/16	1 1/2	11/16

## 100 MV

B-300-100	300	7 <sup>3</sup> / <sub>4</sub>	1 3/4	1/2	6 <sup>5</sup> / <sub>8</sub>	7/16	1	3/8
B-400-100	400	7 <sup>3</sup> / <sub>4</sub>	2	3/4	6 <sup>5</sup> / <sub>8</sub>	7/16	1 1/4	3/8
B-500-100	500	7 <sup>3</sup> / <sub>4</sub>	2	3/4	6 <sup>5</sup> / <sub>8</sub>	7/16	1 1/4	3/8
B-600-100	600	7 <sup>3</sup> / <sub>4</sub>	2	3/4	6 <sup>5</sup> / <sub>8</sub>	7/16	1 1/4	3/8
B-750-100	750	7 <sup>3</sup> / <sub>4</sub>	2 1/4	3/4	6 <sup>5</sup> / <sub>8</sub>	7/16	1 1/2	3/8
B-800-100	800	7 <sup>3</sup> / <sub>4</sub>	2 3/8	3/4	6 <sup>5</sup> / <sub>8</sub>	7/16	1 1/2	7/16
B-1000-100	1000	7 <sup>3</sup> / <sub>4</sub>	2 1/2	1	6 <sup>5</sup> / <sub>8</sub>	7/16	1 1/2	1/2
B-1200-100	1200	7 <sup>3</sup> / <sub>4</sub>	2 7/8	1	6 <sup>5</sup> / <sub>8</sub>	7/16	1 1/2	11/16

DIMENSIONS in inches. TOLERANCES ±.015 for hole diameters. Other tolerances ±.030 unless otherwise noted.



**EMPRO MANUFACTURING CO., INC.** ..... BOX 26064 • INDIANAPOLIS, IN 46226  
PHONE (317) 823-4478

