

## Lascar Multi-Function Graphics Meters

**NEW**

- Three Color TFT Screen Sizes
- Programmed via USB Interface
- User Selectable Meter Display Styles Including Touch Screen Applications
- 0-40V or 4-20mA DC Input
- 4 to 30 VDC Supply Voltage
- Screw Terminal Connections
- Free Windows Configuration Software
- Optional Thermocouple Add-on Board
- NEMA 6X Version Available

The Panel Pilot Series is a family of color TFT graphics meters that users can program to display a variety of meter styles. Available in 2.4", 2.8" and 3.5" sizes, the meters are programmable via USB interface with free Windows-based configuration software. Users can select the type of meter style they want and personalize the display by selecting preferences in color, text and voltage input scaling. Once programming is complete, the meter is detached and mounted in the panel. Each unit is supplied with a variety of standard display styles. A 2.4" NEMA 6X model is available for hostile environments.



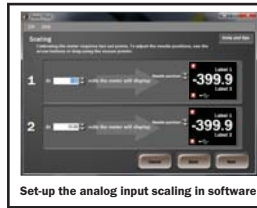

Connect PanelPilot display to PC via USB



Choose the best configuration for your application



Color individual display elements and customize text labels



Set-up the analog input scaling in software



Upload configuration and place meter in application

### SPECIFICATIONS

Input:	0-40V DC (single ended)
Ranges:	8 ranges, software selected
Accuracy:	0.05% typical, 0.1% max.
Linearity:	± 1 count
Sample Rate:	3/second
Display:	320 x 240 color TFT touchscreen
Operating Temperature:	0 - 40°C
Supply Voltage:	4 to 30 VDC
Supply Current:	35mA at 30V, 190mA at 4V supply
PC Software:	Windows 7, Vista, 2000, XP

### ORDERING INFORMATION

Part #	Description	Input	Dimensions (inch)
SGD24-M	2.4" Panel Pilot	0-40 VDC	3.0 x 1.9 x 0.75
SGD28-M	2.8" Panel Pilot	0-40 VDC	3.4 x 2.3 x 0.80
SGD35-M	3.5" Panel Pilot	0-40 VDC	3.7 x 3.0 x 0.90
SGD24-M420	2.4" Panel Pilot	4-20 mA	3.0 x 1.9 x 0.75
SGD28-M420	2.8" Panel Pilot	4-20 mA	3.4 x 2.3 x 0.80
SGD35-M420	3.5" Panel Pilot	4-20 mA	3.7 x 3.0 x 0.90
SGD24-M-IP	2.4" Panel Pilot NEMA 6X	0-40 VDC	3.0 x 1.9 x 0.75
SGD ADPT-TC	Thermocouple Add-on board, with Type K probe		
CABLE USB A-MF	Type A to Mini USB		

## Lascar Enhanced Digital Panel Meters



### DUAL COLOR INDICATORS

- Backlit 3½ Digit LCD Display
- Adjustable Hi & Lo Thresholds
- Selectable Normal Color - Green or Red
- 3 Open Collector Outputs (Hi, Lo, OK)
- 4.5-5.5V DC Supply
- Selectable Decimal Point Position
- 3.0" x 1.73" Size with Large 0.75" Digits
- Simple DIP Switch & Pushbutton Setup

### ORDERING INFORMATION

DPM950S-FPSI	3.5 Digit Dual Color LCD Meter, ±200mV DC Bipolar Input
DPM942S-FPSI	3.5 Digit Dual Color LCD Meter, 4-20mA DC Input
BEZ900-IP	IP67, NEMA 4X Metal Bezel with Glass Window (fits above meters in same 2.83x1.57" panel cutout)



### SPLASHPROOF LOW LIGHT DISPLAYS

- Backlit 3½ Digit LCD Display
- ±200mV DC Bipolar Input
- 4.75-7.5V DC Supply
- Selectable Decimal Point Position
- 1.38" x 0.88" Size, 0.38" Digit Height
- Auto-zero, Auto-polarity

### ORDERING INFORMATION

SP400-EB-W	Black LCD w/ white LED backlight
SP400-EB-R	Black LCD w/ red LED backlight
SP400-EB-B	Black LCD w/ blue LED backlight
SP400-EB-Y	Black LCD w/ yellow LED backlight
SP400-EB-G	Black LCD w/ green LED backlight
SP400-EB-O	Black LCD w/ orange LED backlight
SP400-EB-M	Black LCD w/ magenta LED backlight



### SUB-MINIATURE SNAP-IN 3½ DIGIT LCD METERS

### ORDERING INFORMATION

Part #	Description	Digit Height	Dimensions	Power Supply
DPM1AS-BL	±200mV DC Meter w/backlight	0.22"	1.18 x 0.55"	3.0-7.5 or 6.0-15.0 VDC
DPM3AS-BL	±200mV DC Meter w/backlight	0.43"	1.57 x 0.71"	3.0-7.5 or 6.0-15.0 VDC
DPM342	4-20mA Meter w/backlight	0.43"	1.57 x 0.71"	loop-powered