

Authorized Distributor:
WESCHLER INSTRUMENTS
 phone: 800-903-9870 440-378-6580
 www.weschler.com info@weschler.com



AXM-WEb2

AcuVim II/ AcuVim-L Communications Module



D A T A S H E E T

AXM-WEB2

Dual Ethernet and Wi-Fi Communication Module Datasheet



AXM-WEB2 includes dual Ethernet ports and Wi-Fi communication channel for the Acuvim II and Acuvim-L Series power meters. Multi-protocols are supported such as IEC61850 2nd Ed., Modbus, MQTT, BACnet, and DNP 3.0 V2.

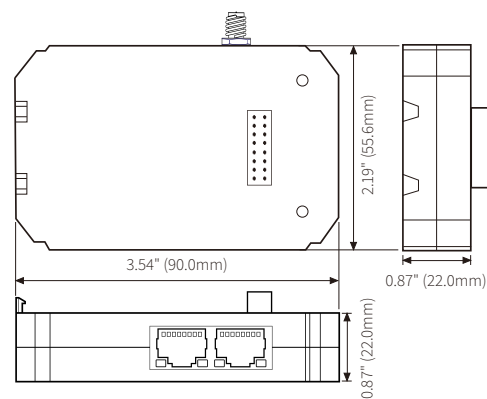
Communication

Meter Series	Acuvim II, Acuvim-L
Ethernet	LAN Dual RJ45 10/100M Ethernet
Wi-Fi	2.4GHz,5GHz
Protocols	IEC 61850 2nd Ed., EtherNet/IP, Modbus-TCP/IP, BACnet-IP, PROFINET, SNMP V3, DNP 3.0 V2, RSTP, SMTP, NTP Synchronization, HTTP/HTTPs post, FTP post, sFTP server, HTTPs webserver, MQTT

Features

- + Dual Ethernet ports and Wi-Fi works simultaneously with different networks & DAQ systems. RJ45 supports individual network configuration COMTRADE file format for waveform capture and event data of electrical power systems
- + 8 GB onboard memory with 1-second interval datalogging capabilities. Metering data backup log to avoid data loss during network downtime
- + Industry leading Fast Read mode at 100ms and 20ms response rate via Modbus-TCP/IP protocol for real-time data updates
- + Secure TLS1.2/SSL compliant encrypted webserver for industry-leading cybersecurity standard EtherNet/IP and IEC 61850 2nd Ed. protocol support for industrial automation, utility and substation
- + Remote access to WEB2 dashboard interface for real-time meter data, trend analysis, harmonics, waveform in graph and tabular format Wi-Fi supports Access Point mode and Station mode for both direct connection/configuration and public Wi-Fi network connection

Dimensions



Ordering Information

	Module Type	-	Protocol
Ordering Example:	AXM-WEB2		
	AXM		WEB2
			Two Ethernet ports, Wi-Fi



Accuenergy Inc.
 Los Angeles - Toronto - Pretoria
 North America Toll Free: 1-877-721-8908
 Web: www.accuenergy.com
 Email: marketing@accuenergy.com

AXM-WEB2 FOLC

Fiber Optics, Ethernet, & Wi-Fi Communication Module Datasheet



AXM-WEB2 FOLC provides fast Fiber Optics LC port, single Ethernet port and Wi-Fi communication channel for the Acuvim II and Acuvim-L Series power meter. Multi-protocols are supported such as IEC 61850 2nd Ed., EtherNet/IP, Modbus, BACnet, DNP 3.0 V2, and MQTT.



Accuenergy Inc.

Los Angeles - Toronto - Pretoria
North America Toll Free: 1-877-721-8908
Web: www.accuenergy.com
Email: marketing@accuenergy.com

Revision Date: March 2026 Version: 2.0.2
Specs Subject To Change Without Notice.



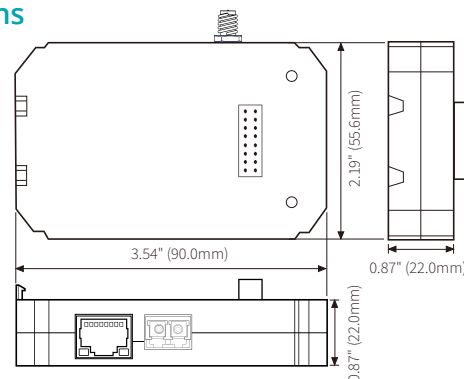
Communication

Meter Series	Acuvim II, Acuvim-L
Fiber Optics Connector Type	LC
Wavelength	1310nm
Optical Fiber Details	Multimode 62.5/125 μ m and 50/125 μ m
Ethernet	LAN RJ45 10/100M Ethernet
Wi-Fi	2.4GHz, 5GHz
Protocols	IEC 61850 2nd Ed., EtherNet/IP, Modbus-TCP/IP, BACnet-IP, PROFINET, SNMP V3, DNP 3.0 V2, SMTP, NTP Synchronization, HTTP/HTTPs post, FTP post, sFTP server, HTTPs webserver, MQTT

Features

- + Duplex Fiber Optics LC connector, Ethernet port, and Wi-Fi works simultaneously with different networks & DAQ systems.
- + Secure TLS 1.2/SSL compliant encrypted webserver for industry-leading cybersecurity standard
- + Multimode 62.5/125 μ m and 50/125 μ m for data centers, battery storage and utility
- + COMTRADE file format for waveform capture and event data of electrical power systems
- + 8 GB onboard memory with 1-second interval datalogging capabilities. Metering data backup log to avoid data loss during network downtime
- + Industry leading Fast Read mode at 100ms and 20ms response rate via Modbus-TCP/IP protocol for real-time data update
- + 802.3u Fast Ethernet 100Base-FX compatible up to 2km
- + EtherNet/IP and IEC 61850 2nd Ed. protocol support for industrial automation, utility and substation
- + Remote access to WEB2 dashboard interface for real-time meter data, trend analysis, harmonics, waveform in graph and tabular format
- + Wi-Fi supports Access Point and Station mode for both direct connection/configuration & public Wi-Fi network connection

Dimensions



Ordering Information

	Module Type	-	Protocol
Ordering Example:	AXM-WEB2 FOLC		
	AXM		WEB2 FOLC
			Ethernet, Fiber Optics LC, Wi-Fi

AXM-WEB2-D

Dual Ethernet Communication Module Datasheet



AXM-WEB2-D includes dual Ethernet ports for the Acuvim II and Acuvim-L Series power meters. Multi-protocols are supported such as IEC61850 2nd Ed., Modbus, BACnet, MQTT, and DNP 3.0 V2.

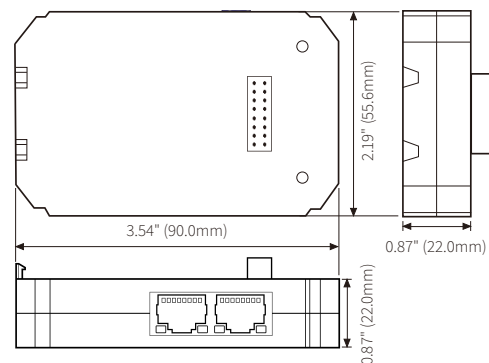
Communication

Meter Series	Acuvim II, Acuvim-L
Ethernet	LAN Dual RJ45 10/100M Ethernet
Protocols	IEC 61850 2nd Ed., EtherNet/IP, Modbus-TCP/IP, BACnet-IP, PROFINET, SNMP V3, DNP 3.0 V2, RSTP, SMTP, NTP Synchronization, HTTP/HTTPs post, FTP post, sFTP server, HTTPs webserver, MQTT

Features

- + Dual Ethernet ports works simultaneously with different networks & DAQ systems. RJ45 supports individual network configuration
- + COMTRADE file format for waveform capture and event data of electrical power systems
- + 8 GB onboard memory with 1-second interval datalogging capabilities. Metering data backup log to avoid data loss during network downtime
- + Industry leading Fast Read mode at 100ms and 20ms response rate via Modbus-TCP/IP protocol for real-time data updates
- + Secure TLS1.2/SSL compliant encrypted webserver for industry-leading cybersecurity standard
- + EtherNet/IP and IEC 61850 2nd Ed. protocol support for industrial automation, utility, and substation
- + Remote access to WEB2 dashboard interface for real-time meter data, trend analysis, harmonics, waveform in graph and tabular format

Dimensions



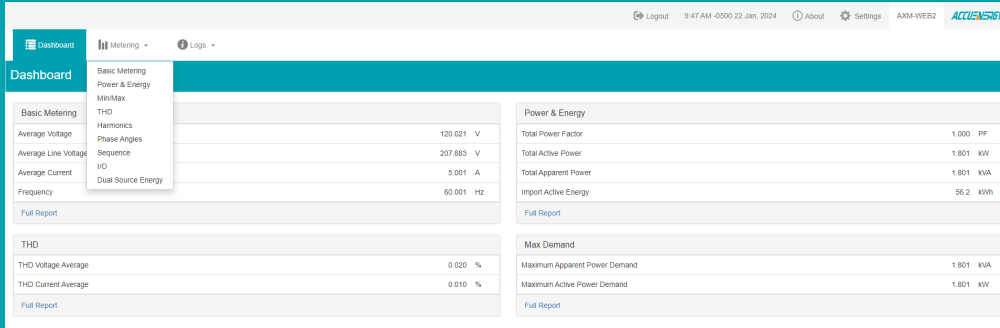
Ordering Information

Module Type	-	Protocol
Ordering Example: AXM	-	WEB2-D
		Two Ethernet ports



Accuenergy Inc.
 Los Angeles - Toronto - Pretoria
 North America Toll Free: 1-877-721-8908
 Web: www.accuenergy.com
 Email: marketing@accuenergy.com

WEB2 Interface

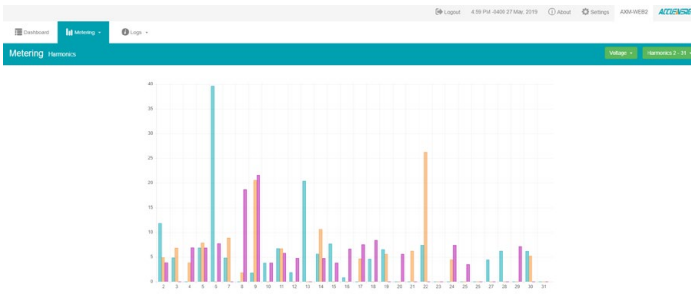


Metering Dashboard

- + Basic Metering
- + Power & Energy
- + Min/Max
- + THD
- + Harmonics
- + Phase Angles
- + Sequence
- + I/O

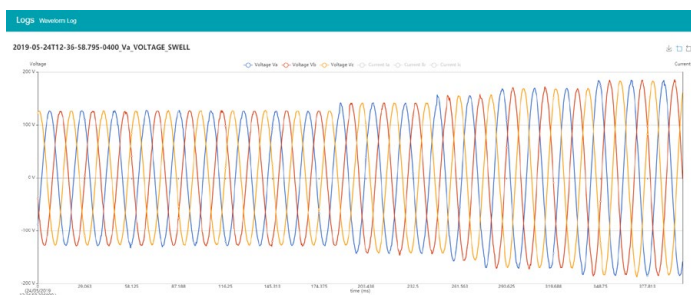
Metering Harmonics

Display voltage and current harmonics between 2nd - 3rd or 32nd - 63rd ingraphical and tabular format. Parameters are updated every 15 seconds.



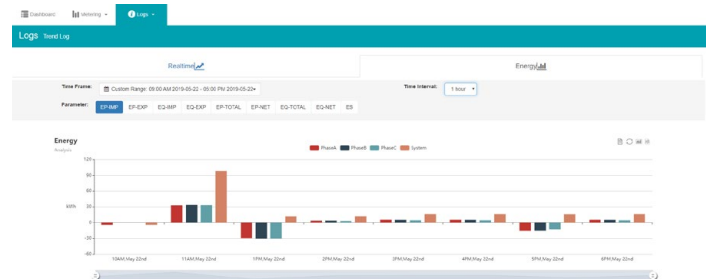
Waveform Log

Available for Acuvim IIW, it supports waveform capture when a power quality event occurs 10 cycles before and after the triggering point for voltage sag, swells, or over-current.



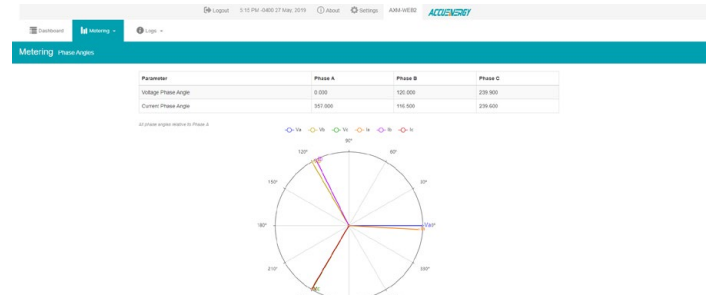
Trend Log

The real-time trend and energy trend graph shows a number of different parameters with option to configure different time frames and time intervals.



Phase Angle

Visual diagram of the phase angles of voltage and current waveform and can be used for remote troubleshooting. Parameters are updated every 10 seconds.



COMMUNICATION MODULES

● Function; ⊕ Option; Blank NA

Acuvim II/L
Meter

AXM
WEB2 FOLC

AXM
WEB2

AXM-WEB2-D



Modbus-RTU	●			
BACnet-MS/TP	●			
DNP 3.0 V2 Over IP		●	●	●
IEC 61850 2nd Ed.		●	●	●
Modbus-TCP/IP		●	●	●
HTTP/HTTPs Webserver		●	●	●
SMTP Email		●	●	●
SNMP V3		●	●	●
EtherNet/IP		●	●	●
MQTT		●	●	●
RSTP		●	●	●
IPv6		●	●	●
HTTP/HTTPs Push		●	●	●
FTP Post		●	●	●
sFTP Server		●	●	●
Datalogging	8MB	8GB	8GB	8GB
BACnet-IP		●	●	●
PROFINET		●	●	●
Wi-Fi		●	●	
RJ45 Ports		1	2	2
Fiber Optics LC		●		
NTP Synchronization		●	●	●