

# Simple Logger® II Four Channel AmpFlex® Model AL834

Authorized Distributor:

**WESCHLER INSTRUMENTS**

phone: 800-903-9870 440-378-6580

fax: 800-903-9590 440-238-0660

www.weschler.com info@weschler.com



Bluetooth®



## SPECIFICATIONS

MODEL	AL834	
<b>ELECTRICAL</b>		
Channels	Four	
Input	Captive AmpFlex® AC Current Flexible Sensors	
Range	300A <sub>AC</sub>	3000A <sub>AC</sub>
Accuracy (50/60Hz)	0 to 5A unspecified 5 to 300A: ±(1% of Reading + 0.5A)	0 to 15A unspecified 15 to 3000A: ±(1% of Reading + 1A)
Resolution	0.1A <sub>AC</sub>	0.5A <sub>AC</sub>
Sample Rate	64 samples/cycle	
Storage Rate	Programmable from 125ms to 1 per day	
Storage Modes	Start/Stop, FIFO, Extended Recording Mode (XRM™), Store on Alarm	
Recording Length	15 minutes to 8 weeks, programmable using DataView®	
Memory	1,000,000 measurements (2MB) The recorded data is stored in non-volatile memory and will be retained even if the battery is low or removed.	
Communication	Bluetooth (Class 2)	
Power Source	4 x 1.5V C-cell Alkaline batteries (included)	
Battery Life	up to 180 days (dependent on storage rate/recording length)	
<b>MECHANICAL</b>		
Dimensions	5.904 x 5.904 x 3.568" (150 x 150 x 91mm) w/o Sensor	
Max Conductor Size	Ø 8" (203mm)	
Weight (with battery)	3.9 lbs (1.77kg)	
Case	UL94-V0	
Vibration	IEC 68-2-6 (1.5mm, 10 to 55Hz)	
Shock	IEC 68-2-27 (30G)	
Drop	IEC 68-2-32 (1m)	

## FEATURES

- ▶ Includes four integral AmpFlex® flexible current probes that will measure from up to 3000A TRMS with 0.5A resolution
- ▶ Dual range 300/3000A user selectable per channel
- ▶ 64 samples per cycle
- ▶ Programmable storage rates from 125ms to 1 per day
- ▶ 4 user selectable storage modes
- ▶ Stores up to 1,000,000 measurements in non-volatile memory
- ▶ Powered by standard Alkaline batteries for a period of up to 180 days
- ▶ Lightweight, compact and weatherproof
- ▶ 6 LED indicators quickly and clearly display logger status
- ▶ Wireless Bluetooth communication (Bluetooth module included)
- ▶ Includes DataView® software FREE for data storage, real-time waveform display, analysis & report generation
- ▶ EN 61010-1; 600V CAT IV, 1000V CAT III

## APPLICATIONS

- ▶ Single/Split phase and 3 phase load monitoring
- ▶ Neutral and ground current monitoring
- ▶ Intermittent problem detection
- ▶ Harmonic current monitoring using DataView® software
- ▶ Machine load monitoring
- ▶ Fault current detection
- ▶ Load profiling

### DESCRIPTION

Simple Logger® II Model AL834 (4-Channel, TRMS, Bluetooth, AmpFlex® 300/3000A<sub>AC</sub>)

### CATALOG NO.

2126.14

Technical Assistance (800) 343-1391



# DataView®

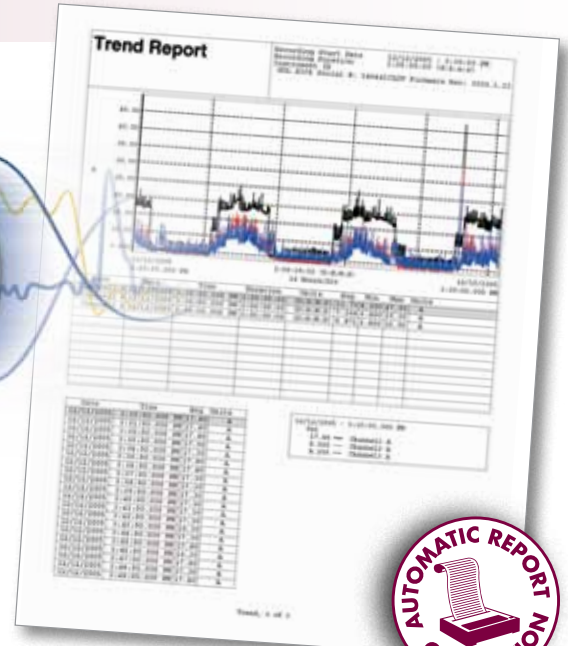
## Data Analysis and Reporting Software for Data Loggers

### Configure all data logger functions of the Simple Logger II Models

- Display and analyze real-time data on your PC
- Configure all data logger functions and parameters from your PC including sample rate, recording length, channel configuration and more
- Create and store a complete library of configurations that can be uploaded to the logger as needed
- Zoom in and out and pan through sections of the graph to analyze the data
- Download, display and analyze recorded data
- Display waveforms, trend graphs, harmonics (AC models) and text summaries
- Create custom views and reports
- Print reports using standard or custom templates you design
- Free software upgrades are available on our website [www.aemc.com](http://www.aemc.com)



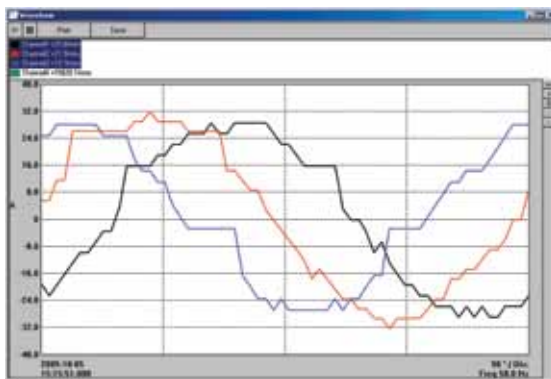
DataView® is included with all Simple Logger II Models.



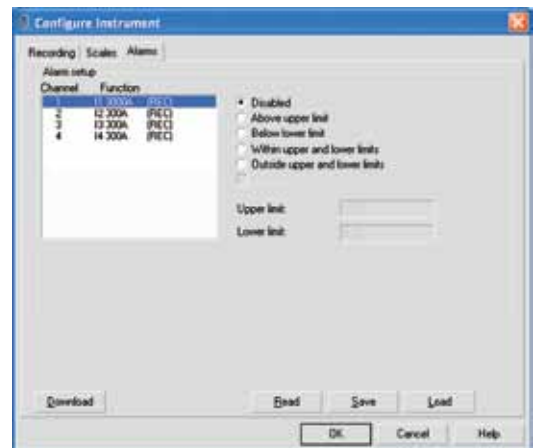
Real-time view of trend, waveform and status screens.



Quick and simple configuration of all functions and settings from one dialog box.



Real time display of all active inputs on computer through DataView® software.



Configure all alarm functions with straightforward selections.