

# MEGOHMMETERS

## 10,000 & 15,000V Digital



### Models 6550 & 6555



Expert tools for testing insulation safely and accurately; ideal for use on rotating machinery and cables operating at higher voltages

#### SPECIFICATIONS

| MODELS                                      | 6550   | 6555  |
|---|--|---|
| <b>INSULATION TESTS</b>                     |  |   |
| <b>Test Voltage</b>                         | 500V<br>1000V<br>2500V<br>5000V<br>10,000V<br>15,000V  | 10kΩ to 2000GΩ (2TΩ)<br>10kΩ to 4000GΩ (4TΩ)<br>10kΩ to 10,000GΩ (10TΩ)<br>10kΩ to 15,000GΩ (15TΩ)<br>10kΩ to 25,000GΩ (25TΩ) |
| <b>Fixed Test Voltages</b>                  | 500/1000/2500/5000/<br>10,000V   | 500/1000/2500/5000/<br>10,000/15,000V   |
| <b>Variable Voltages</b>                    | Variable: 40V to 10kV<br>Three user programmable<br>voltage schemes  | Variable: 40V to 15kV<br>Three user programmable<br>voltage schemes   |
| <b>Ramp Mode</b>                            | Programmable ramps: start voltage/end voltage/duration   |   |
| <b>Ramp Configuration Range</b>             | 40 to 1100V/500 to 10,000V   | 40 to 1100V/500 to 15,000V  |
| <b>Step Mode</b>                            | Up to 10 steps (voltage and duration configurable for each step)   |   |
| <b>Voltage Measurement After Test</b>       | 0 to 2500V <sub>AC</sub> ; 0 to 4000V <sub>DC</sub>  |   |
| <b>Capacitance Measurement</b>              | 0.05 to 9.999μF/10.00 to 49.99μF   |   |
| <b>Leakage Current Measurement</b>          | 0 to 8mA   |   |
| <b>Discharge After Test</b>                 | Yes/Automatic  |   |
| <b>Additional Test Stop Modes</b>           | I-Limit<br>Early-Break<br>Timer  |   |
| <b>Burn Mode</b>                            | Programmable: 0.2 to 5mA<br>Constant testing   |   |
| <b>Ratio Calculation</b>                    | PI, DAR, DD  |   |
| <b>Calculation of R at ref. T°</b>          | Yes  |   |
| <b>Measurement Display Filter</b>           | 3 filters with 3 possible time-constants   |   |
| <b>Graphs on Display</b>                    | R(t)+v(t); i(t); i(v)  |   |
| <b>Storage</b>                              | 256 registers, stores 80,000 points: R, V, I and date  |   |
| <b>Communication</b>                        | USB optically-isolated port  |   |
| <b>PC Software</b>                          | DataView® software   |   |
| <b>Power Supply</b>                         | NiMH rechargeable batteries, two 9.6V 4Ah battery packs<br>charging by external voltage: 90 to 260V; 50/60Hz |   |
| <b>Battery Charging</b>                     | Battery charging allowed while performing insulation measurements  |   |
| <b>Electrical Safety</b>                    | 1000V CAT IV; IEC61010-1 and IEC 61557   |   |
| <b>EMC, Mechanical Protection, Altitude</b> | EN 61326-1, IP54, 3000m  |   |
| <b>Dimensions/Weight</b>                    | 13.39 x 11.81 x 7.87" (340 x 300 x 200mm)/approx. 6.2kg<br>(excluding accessories)                           |   |



Read our technical tips about Insulation Resistance Testing



#### PRODUCT INCLUDES

► **DataView® Software**  
Included with  
Models 6550 & 6555



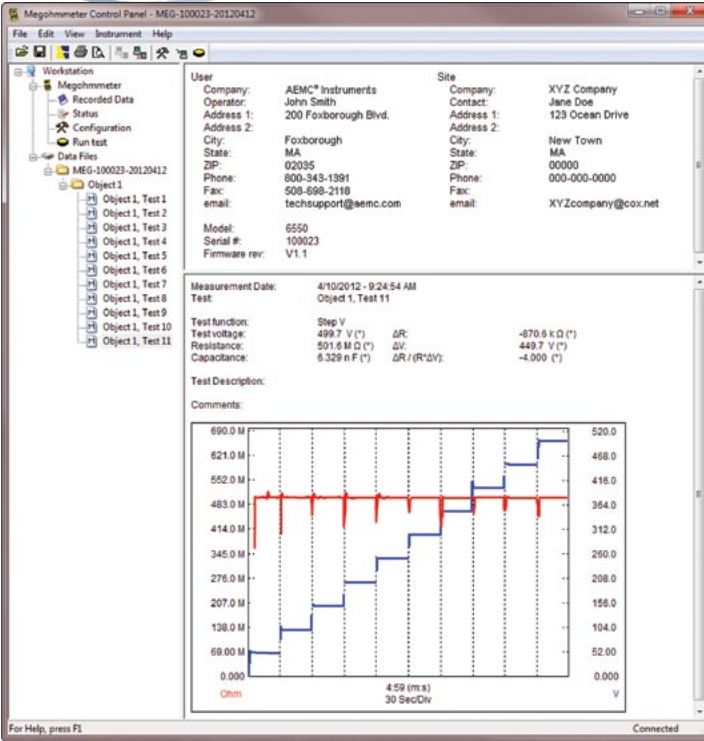
Includes one red, blue and black 9ft 15kV integral lead (blue), one red, blue and black alligator clip (1000V CAT IV), one red and blue test probe (1000V CAT IV), optical USB cable, US 115V power cord, small classic tool bag, user manual

# MEGOHMMETERS

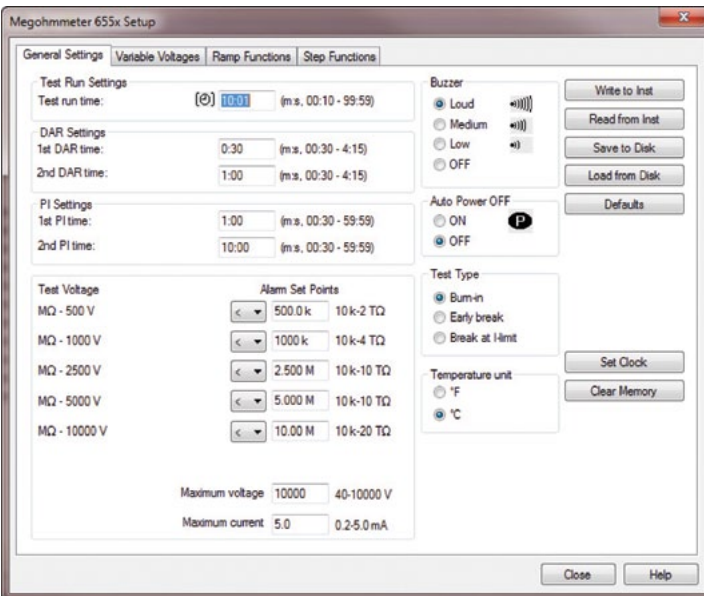
## 10,000 & 15,000V Digital

### Models 6550 & 6555

## DataView® Displays



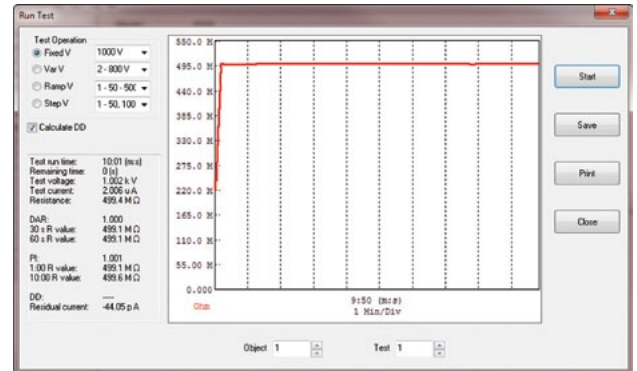
All stored test results presented on one screen.



Clear and straight forward set up of parameters.

### ► FEATURES

- Wide measurement range from 10kΩ to 30TΩ
- Fixed or programmable test voltage from 40V to 10kV/15kV
- 5mA charging current
- Step voltage testing
- Ramp voltage testing
- Large, backlit graphical LCD screen with digital display, bargraph and R(t)+v(t), i(t) and i(v) graphs
- Automatic calculation of DAR / PI / DD / ΔR (ppm/V) ratios
- Multiple test modes: voltage ramp and step with “burning”, “early break” and “I-limit” modes
- Three filter settings to optimize measurement stability
- Calculation of R at a reference temperature
- Storage of 80,000 measurements
- Optically-isolated USB communication for transfer onto PC and report generation with DataView® software



Real time display of measurement results.

### CATALOG NO. DESCRIPTION

|         |  |
|---------|--|
| 2130.31 | Megohmmeter Model 6550 (Graphical, Analog Bargraph, Backlight, Alarm, Timer, 500V, 1000V, 2500V, 5000V, 10kV, Ramp, StepV, Variable, Auto DAR/PI/DD, USB w/DataView® software)       |
| 2130.32 | Megohmmeter Model 6555 (Graphical, Analog Bargraph, Backlight, Alarm, Timer, 500V, 1000V, 2500V, 5000V, 10kV, 15kV, Ramp, StepV, Variable, Auto DAR/PI/DD, USB w/DataView® software) |