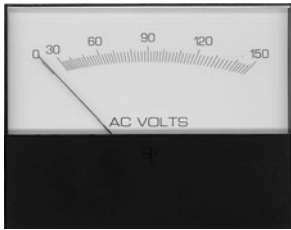


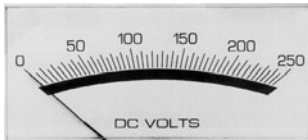
Jewell DC Current & Voltage Meters

Modutec S & W Series

- Five Display Sizes: 1 1/2", 2 1/2", 3 1/2", 4 1/2" and 5 1/2"
- Shielded Taut-Band Movement
- Surface-Mount or Window-Mount Models



S Series



W Series

ORDERING INFORMATION

Use Ordering Code Guide to complete Part #. Insert Size Code in box 1 and Model Code in box 2.

DC Millivoltmeters - Zero left, 200Ω/V

| | | |
|-------|-----|----------|
| 0-50 | 1 2 | -DMV-050 |
| 0-100 | 1 2 | -DMV-100 |

DC Millivoltmeters - Zero center, 200Ω/V

| | | |
|-----------|-----|------------|
| 50-0-50 | 1 2 | -DMV-50U50 |
| 100-0-100 | 1 2 | -DMV-1H1 |

DC Voltmeters - Zero left, 1000Ω/V, except *10kΩ/V

| | | |
|--------|-----|-------------|
| 0-1 | 1 2 | -DVV-001 |
| 0-1.5 | 1 2 | -DVV-0015 |
| 0-2 | 1 2 | -DVV-002 |
| 0-3 | 1 2 | -DVV-003 |
| 0-5 | 1 2 | -DVV-005 |
| 0-10 | 1 2 | -DVV-010 |
| 0-15 | 1 2 | -DVV-015 |
| 0-20 | 1 2 | -DVV-020 |
| 0-25 | 1 2 | -DVV-025 |
| 0-30 | 1 2 | -DVV-030 |
| 0-40 | 1 2 | -DVV-040 |
| 0-50 | 1 2 | -DVV-050 |
| 0-75 | 1 2 | -DVV-075 |
| 0-80 | 1 2 | -DVV-080 |
| 0-100 | 1 2 | -DVV-100 |
| 0-150 | 1 2 | -DVV-150 |
| 0-200 | 1 2 | -DVV-200 |
| 0-250 | 1 2 | -DVV-250 |
| 0-300 | 1 2 | -DVV-300 |
| 0-500 | 1 2 | -DVV-500 |
| 0-600 | 1 2 | -DVV-600 * |
| 0-750 | 1 2 | -DVV-750 * |
| 0-1000 | 1 2 | -DVV-1000 * |

DC Voltmeters - Zero center, 1000Ω/V, except *10kΩ/V

| | | |
|-----------|-----|--------------|
| 5-0-5 | 1 2 | -DVV-5U5 |
| 10-0-10 | 1 2 | -DVV-10U10 |
| 15-0-15 | 1 2 | -DVV-15U15 |
| 25-0-25 | 1 2 | -DVV-25U25 |
| 50-0-50 | 1 2 | -DVV-50U50 |
| 100-0-100 | 1 2 | -DVV-1H1 |
| 150-0-150 | 1 2 | -DVV-1.5H1.5 |
| 300-0-300 | 1 2 | -DVV-3H3 |
| 500-0-500 | 1 2 | -DVV-5H5 |
| 600-0-600 | 1 2 | -DVV-6H6 * |

SPECIFICATIONS

| Model | W Series | | | | |
|------------------|---|---------------------|---------------------|---------------------|---------------------|
| | 1 1/2" | 2 1/2" | 3 1/2" | 4 1/2" | 5 1/2" |
| Case Size | 1 1/2" | 2 1/2" | 3 1/2" | 4 1/2" | 5 1/2" |
| Size (H x W x D) | 1.77 x 2.26 x 1.83" | 2.29 x 3.01 x 2.10" | 2.90 x 3.73 x 2.12" | 4.06 x 5.18 x 2.17" | 4.60 x 5.97 x 2.17" |
| Window (cutout) | 0.935 x 2.15" | 1.27 x 2.90" | 1.595 x 3.61" | 2.345 x 5.02" | 2.59 x 5.78" |
| Model | S Series | | | | |
| | 1 1/2" | 2 1/2" | 3 1/2" | 4 1/2" | 5 1/2" |
| Case Size | 1 1/2" | 2 1/2" | 3 1/2" | 4 1/2" | 5 1/2" |
| Size (H x W x D) | 1.75 x 2.24 x 1.55" | 2.27 x 2.99 x 1.80" | 2.87 x 3.70 x 1.80" | 3.96 x 5.10 x 1.80" | 4.48 x 5.85 x 1.80" |
| Barrel (cutout) | 1.55" | 2.22" | 2.82" | 2.82" | 2.82" |
| All Models: | | | | | |
| Scale Length | 1.75" | 2.41" | 3.0" | 4.22" | 5.12" |
| Accuracy | ±2% of full scale | | | | |
| Repeatability | ±0.5% of full scale | | | | |
| Response Time | 1.5 sec. (except 3 sec. for $\leq 50\mu A$ full scale) | | | | |

ORDERING INFORMATION

| DC Microammeters - Zero left | | |
|---|-------|-------------------|
| 0-50 | 2600 | 1 2 -DUA-050 |
| 0-100 | 640 | 1 2 -DUA-100 |
| 0-200 | 220 | 1 2 -DUA-200 |
| 0-500 | 135 | 1 2 -DUA-500 |
| DC Microammeters - Zero center | | |
| 25-0-25 | 2600 | 1 2 -DUA-25U25 |
| 50-0-50 | 640 | 1 2 -DUA-50U50 |
| 100-0-100 | 230 | 1 2 -DUA-1H1 |
| 500-0-500 | 35 | 1 2 -DUA-5H5 |
| DC Milliammeters - Zero left | | |
| 0-1 | 35.0 | 1 2 -DMA-001 |
| 0-2 | 12.5 | 1 2 -DMA-002 |
| 0-3 | 7.2 | 1 2 -DMA-003 |
| 0-5 | 3.8 | 1 2 -DMA-005 |
| 0-10 | 2.2 | 1 2 -DMA-010 |
| 0-15 | 3.3 | 1 2 -DMA-015 |
| 0-20 | 2.5 | 1 2 -DMA-020 |
| 0-25 | 2.0 | 1 2 -DMA-025 |
| 0-30 | 1.7 | 1 2 -DMA-030 |
| 0-50 | 1.0 | 1 2 -DMA-050 |
| 0-100 | .50 | 1 2 -DMA-100 |
| 0-150 | .33 | 1 2 -DMA-150 |
| 0-200 | .25 | 1 2 -DMA-200 |
| 0-300 | .166 | 1 2 -DMA-300 |
| 0-500 | .10 | 1 2 -DMA-500 |
| 0-750 | .066 | 1 2 -DMA-750 |
| DC Milliammeters - Zero center | | |
| 1-0-1 | 35.0 | 1 2 -DMA-1U1 |
| 5-0-5 | 3.5 | 1 2 -DMA-5U5 |
| 10-0-10 | 2.2 | 1 2 -DMA-10U10 |
| 25-0-25 | 2.0 | 1 2 -DMA-25U25 |
| 50-0-50 | 1.0 | 1 2 -DMA-50U50 |
| 100-0-100 | .50 | 1 2 -DMA-1H1 |
| 200-0-200 | .25 | 1 2 -DMA-2H2 |
| 500-0-500 | .10 | 1 2 -DMA-5H5 |
| DC Ammeters - Zero left, self-contained | | |
| 0-1 | .050 | 1 2 -DAA-001 |
| 0-1.5 | .033 | 1 2 -DAA-001.5 |
| 0-2 | .025 | 1 2 -DAA-002 |
| 0-3 | .0166 | 1 2 -DAA-003 |
| 0-5 | .010 | 1 2 -DAA-005 |
| 0-10 | .0050 | 1 2 -DAA-010 |
| 0-15 | .0033 | 1 2 -DAA-015 ** |
| 0-20 | .0025 | 1 2 -DAA-020 ** |
| 0-25 | .0020 | 1 2 -DAA-025 ** |
| 0-30 | .0015 | 1 2 -DAA-030 ** |
| 0-50 | .0010 | 1 2 -DAA-050 ** |
| DC Ammeters - Zero center, self contained | | |
| 1-0-1 | .050 | 1 2 -DAA-1U1 |
| 3-0-3 | .016 | 1 2 -DAA-3U3 |
| 5-0-5 | .010 | 1 2 -DAA-5U5 |
| 10-0-10 | .005 | 1 2 -DAA-10U10 |
| 15-0-15 | .003 | 1 2 -DAA-15U15 ** |
| 25-0-25 | .002 | 1 2 -DAA-25U25 ** |
| 50-0-50 | .001 | 1 2 -DAA-50U50 ** |

ORDERING CODE GUIDE

| | | |
|---|--------------------|---------------|
| 1 | Insert Size Code: | CASE SIZE |
| 1 | | 1 1/2" |
| 2 | | 2 1/2" |
| 3 | | 3 1/2" |
| 4 | | 4 1/2" |
| 5 | | 5 1/2" |
| 2 | Insert Model Code: | STYLE |
| S | | Surface Mount |
| W | | Window Mount |

OPTIONS

| | |
|----------------------|-----------------|
| Custom Scaling | Color Bands |
| Mirror Scale | Illumination |
| High Torque Movement | Sealed Case |
| Suppressed Zero | Bezel Mount Kit |

ORDERING INFORMATION

| DC Ammeters - Zero left, 50mV, shunt rated | | |
|--|-------|------------|
| 0-75 | 1 2 | -DAA-075 |
| 0-100 | 1 2 | -DAA-100 |
| 0-150 | 1 2 | -DAA-150 |
| 0-200 | 1 2 | -DAA-200 |
| 0-300 | 1 2 | -DAA-300 |
| 0-500 | 1 2 | -DAA-500 |
| 0-750 | 1 2 | -DAA-750 |
| 0-1000 | 1 2 | -DAA-1000 |
| 0-1200 | 1 2 | -DAA-1200 |
| 0-1500 | 1 2 | -DAA-1500 |
| 0-2000 | 1 2 | -DAA-2000 |
| DC Ammeters - Zero left, 100mV, shunt rated | | |
| 0-75 | E 1 2 | -DAA-075 |
| 0-100 | E 1 2 | -DAA-100 |
| 0-150 | E 1 2 | -DAA-150 |
| 0-200 | E 1 2 | -DAA-200 |
| 0-300 | E 1 2 | -DAA-300 |
| 0-500 | E 1 2 | -DAA-500 |
| 0-750 | E 1 2 | -DAA-750 |
| 0-1000 | E 1 2 | -DAA-1000 |
| 0-1200 | E 1 2 | -DAA-1200 |
| 0-1500 | E 1 2 | -DAA-1500 |
| 0-2000 | E 1 2 | -DAA-2000 |
| DC Ammeters - Zero center, 50mV, shunt rated | | |
| 75-0-75 | 1 2 | -DAA-75U75 |
| 100-0-100 | 1 2 | -DAA-1H1 |
| 200-0-200 | 1 2 | -DAA-2H2 |
| 300-0-300 | 1 2 | -DAA-3H3 |
| 400-0-400 | 1 2 | -DAA-4H4 |
| 500-0-500 | 1 2 | -DAA-5H5 |

** not available in 1 1/2" size