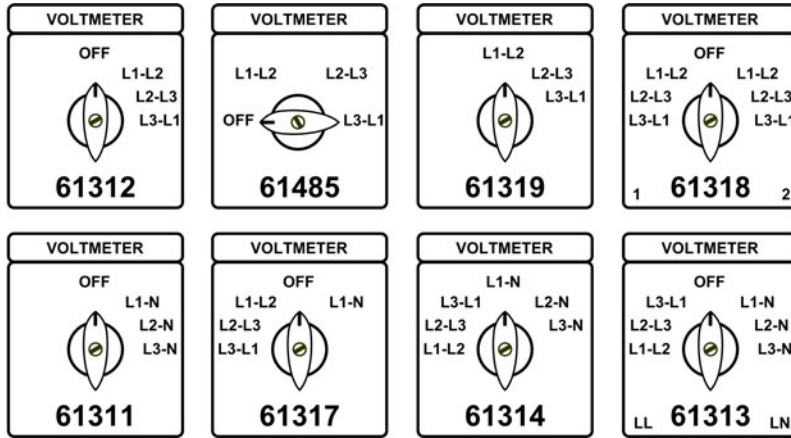


Control Switches Instrumentation Switches

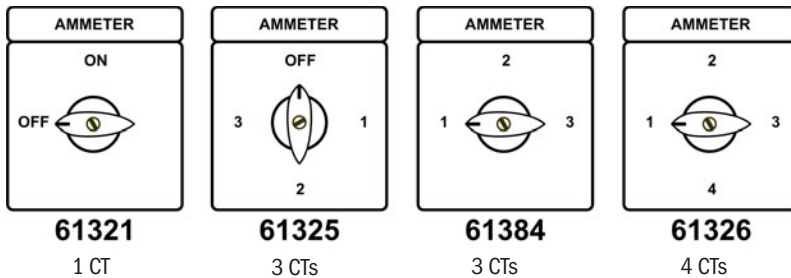
Switch current transformer and potential transformer secondaries to AC ammeters and voltmeters.

VOLTMETER SWITCHES

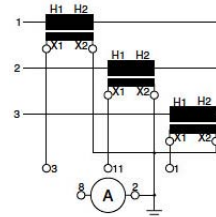


Voltmeter switches are non-shorting (break before make). Ammeter switches are shorting type (make before break).

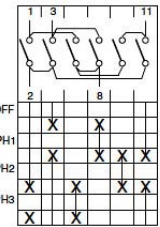
AMMETER SWITCHES - grounded CT, grounded ammeter



61325

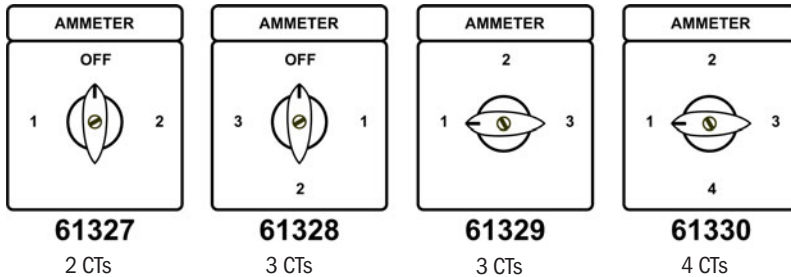


Wiring Diagram

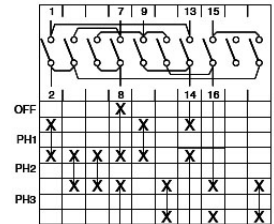
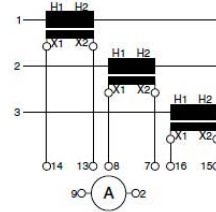


Schematic

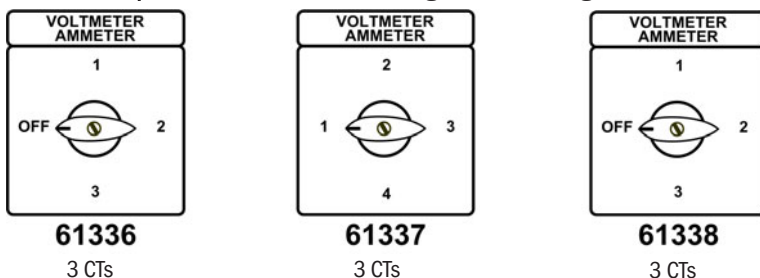
AMMETER SWITCHES - 2 pole for floating ammeter



61328



VOLTMETER / AMMETER SWITCHES - grounded CT, grounded ammeter



Position
 1 = L1-L2, PH1
 2 = L2-L3, PH2
 3 = L3-L1, PH3

Position
 1 = L1-L2
 2 = L2-L3, PH1
 3 = L3-L1, PH2
 4 = L1-N, PH3

Position
 1 = L1-N, PH1
 2 = L2-N, PH2
 3 = L3-N, PH3

ORDERING INFORMATION

To Order—Insert Code for Each Letter to Select Catalog Number.

Example: N20-61336-00

A - B - C

A	Size	
N20		20A, 600V, 12 AWG
N25		25A, 600V, 10 AWG
B	Style Number	
613xx		Select from style diagrams shown e.g. 61325
C	Mounting	
00		48mm plate, 36mm hole pattern
01		64mm plate, 48mm hole pattern

Misc.