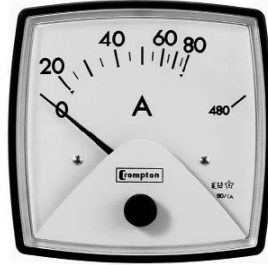


Crompton AC Overload Ammeters

- X6 Overload Scaling for Motor Start Duty
- True RMS Reading, Self Contained 50/60Hz
- 3½" & DIN sizes

Fiesta ▶



Fiesta 3½" Panel Meter

ORDERING INFORMATION

Accuracy: 2.5% Burden: 0.5VA Scale: 90°
Transformer rated

Rating	Input	Catalog #
5A	0-5-30A (x6)	016-026A-LS**-C6
5A	0-5-10A (x2)	016-022A-LS**-C6

** state required scaling at time of order

DIN Panel Meters

ORDERING INFORMATION

Class 1.5, Burden 0.5VA (specify 50 or 60Hz)

X6 Overload		72x72	96x96
Rating	Scaling	Catalog #	Catalog #
5A	0-5-30A	E243-026A-LSLS-C7	E244-026A-LSLS-C7
10A	0-10-60A	E243-026A-MTMT-C7	E244-026A-MTMT-C7
15A	0-15-90A	E243-026A-NDND-C7	E244-026A-NDND-C7
20A	0-20-120A	E243-026A-NGNG-C7	E244-026A-NGNG-C7
30A	0-30-180A	E243-026A-NLNL-C7	E244-026A-NLNL-C7
5A	Transformer rated	E243-026A-LS**-C7	E244-026A-LS**-C7

DIN meters also available with X2 & X5 overload scaling

ORDERING INFORMATION

Class 1.5, Burden 0.5VA (specify 50 or 60Hz)

X3 Overload		72x72	96x96
Rating	Scaling	Catalog #	Catalog #
5A	0-5-15A	E243-023A-LSLS-C7	E244-023A-LSLS-C7
10A	0-10-30A	E243-023A-MTMT-C7	E244-023A-MTMT-C7
15A	0-15-45A	E243-023A-NDND-C7	E244-023A-NDND-C7
20A	0-20-60A	E243-023A-NGNG-C7	E244-023A-NGNG-C7
30A	0-30-90A	E243-023A-NLNL-C7	E244-023A-NLNL-C7
5A	Transformer rated	E243-023A-LS**-C7	E244-023A-LS**-C7

** state required scaling at time of order

ANALOG METERS

Yokogawa DIN Power Meters

- Self-contained (no external transducer)
- Taut band construction
- 1.5 accuracy class (W & VAR)
- 96mm, ¼ DIN size
- Flame retardant ABS case
- 2600V dielectric strength to case

DN96A ▶



SPECIFICATIONS

Deflection:	90°
Accuracy Class	1.0 (W & VAR), 5.0 (Power Factor)
Environment:	0 to 45°C, <75% RH
Insulation Resistance:	>10MΩ at 500V DC
Depth:	83mm

White on black scale with black pointer standard.

Specify full scale value and PT & CT ratios when ordering.

$$\text{Calibration watts or vars} = \frac{\text{MAX. full scale value}}{\text{PT ratio} \times \text{CT ratio}}$$

Calibration watts are 65% to 150%, calibration vars are 33% to 150%.

Also available: 250° deflection (DN96B).

ORDERING INFORMATION

To Order: Specify Model, Range & Frequency followed by -L-BL

A - B - C - L - BL

Example: DN96A51-W55-N-L-BL

	Watts	VAR	Power Factor
A Model			
1 phase, 2 wire	DN96A51	DN96A61	DN96A71
1 phase, 3 wire	DN96A52	DN96A62	DN96A72
3 phase, 3 wire unbal	DN96A55	DN96A65	DN96A75
3 phase, 4 wire bal	DN96A54	DN96A64	---
3 phase, 4 wire unbal	DN96A56	DN96A66	DN96A76

B Range			
1A, 120V	W55	M55	C55
5A, 120V	W56	M56	C56
1A, 240V	W65	M65	C65
5A, 240V	W66	M66	C66
1A, 63.5V	W11	M11	C11*
5A, 63.5V	W12	M12	C12*

C Frequency			
50/60 Hz	N	---	---
50 Hz	---	A	A
60 Hz	---	B	B

*3 phase, 4 wire