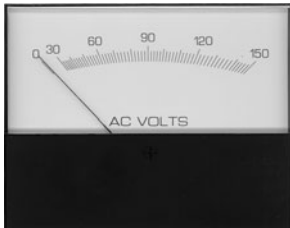


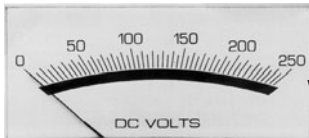
Jewell AC Current and Voltage Meters

Modutec S & W Series

- Five Display Sizes: 1 1/2", 2 1/2", 3 1/2", 4 1/2" and 5 1/2"
- Shielded Taut-Band Movement
- Surface-Mount or Window-Mount Models



S Series



W Series

These meters are available in both moving coil (rectifier type) and iron vane versions. The iron vane construction is relatively insensitive to input distortion. The rectifier type is less affected by frequency variations.

ORDERING INFORMATION

Use Ordering Code Guide to complete Part #. Insert Size Code in box [1] and Model Code in box [2].

AC Voltmeters – Self-contained, rectifier type, 900Ω/V

0-3	[1][2]	-AVV-003
0-5	[1][2]	-AVV-005
0-10	[1][2]	-AVV-010
0-15	[1][2]	-AVV-015
0-25	[1][2]	-AVV-025
0-50	[1][2]	-AVV-050
0-100	[1][2]	-AVV-100
0-150	[1][2]	-AVV-150
0-300	[1][2]	-AVV-300
0-500	[1][2]	-AVV-500
0-600	[1][2]	-AVV-600

AC Voltmeters – Transformer rated, 0-150V, rectifier type

0-750	[1][2]	-AVV-750
0-1500	[1][2]	-AVV-1500
0-3000	[1][2]	-AVV-3000

AC Voltmeters – Iron vane: self-contained, 60Hz nominal

0-3	[1][2]	-AVC-003 **
0-5	[1][2]	-AVC-005 **
0-10	[1][2]	-AVC-010 **
0-15	[1][2]	-AVC-015 **
0-30	[1][2]	-AVC-030 **
0-50	[1][2]	-AVC-050 **
0-100	[1][2]	-AVC-100 **
0-150	[1][2]	-AVC-150 **
0-300	[1][2]	-AVC-300 **
0-500	[1][2]	-AVC-500 **
0-600	[1][2]	-AVC-600 **

AC Voltmeters – Iron vane: transformer rated, 0-150V, 60Hz

0-600	[1][2]	-AVCX-600 **
0-750	[1][2]	-AVCX-750 **
0-1500	[1][2]	-AVCX-1500 **
0-3000	[1][2]	-AVCX-3000 **

SPECIFICATIONS

Model	W Series				
Case Size	1 1/2"	2 1/2"	3 1/2"	4 1/2"	5 1/2"
Size (H x W x D)	1.77 x 2.26 x 1.83"	2.29 x 3.01 x 2.10"	2.90 x 3.73 x 2.12"	4.06 x 5.18 x 2.17"	4.60 x 5.97 x 2.17"
Window (cutout)	0.935 x 2.15"	1.27 x 2.90"	1.595 x 3.61"	2.345 x 5.02"	2.59 x 5.78"
Model	S Series				
Case Size	1 1/2"	2 1/2"	3 1/2"	4 1/2"	5 1/2"
Size (H x W x D)	1.75 x 2.24 x 1.55"	2.27 x 2.99 x 1.80"	2.87 x 3.70 x 1.80"	3.96 x 5.10 x 1.80"	4.48 x 5.85 x 1.80"
Barrel (cutout)	1.55"	2.22"	2.82"	2.82"	2.82"
All Models:					
Scale Length (Rect/Iron)	1.75"	2.41"/2.15"	3.0"/2.7"	4.22"/3.8"	5.12"/---
Accuracy	±2% iron vane type, ±3% AC rectifier type (60 Hz sine wave)				
Repeatability	±2% iron vane, ±0.5% rectifier type				
Response Time	1.5 sec. (except 3 sec. for ≤50μA full scale)				

OPTIONS (WHERE APPLICABLE)

Custom Scaling	Illumination
Mirror Scale	Custom Artwork
High Torque Movement	Sealed Case
Color Bands	Bezel Mount Kit

Also Available: VU Meters & Elapsed Time Meters

ORDERING INFORMATION

AC Milliammeters – Self-contained, rectifier type

0-1	1100W	[1][2]	-AMA-001
0-5	260	[1][2]	-AMA-005
0-10	140	[1][2]	-AMA-010
0-25	90	[1][2]	-AMA-025
0-50	45	[1][2]	-AMA-050
0-100	6.0	[1][2]	-AMA-100
0-200	1.5	[1][2]	-AMA-200 *
0-500	.4	[1][2]	-AMA-500 *

AC Milliammeters – Iron vane: Self-contained, 60Hz nominal input (50-400Hz range)

0-10	2600	[1][2]	-AMC-010 **
0-25	430	[1][2]	-AMC-025 **
0-50	105	[1][2]	-AMC-050 **
0-100	27	[1][2]	-AMC-100 **
0-250	4.3	[1][2]	-AMC-250 **
0-500	1.1	[1][2]	-AMC-500 **

AC Ammeters – Self-contained, rectifier type

0-1	.07	[1][2]	-AAA-001 *
0-1.5	.05	[1][2]	-AAA-0015 *
0-2	.04	[1][2]	-AAA-002 *
0-3	.025	[1][2]	-AAA-003 *
0-5	.015	[1][2]	-AAA-005 *
0-10	.0075	[1][2]	-AAA-010 *
0-15	.005	[1][2]	-AAA-015 *
0-20	.004	[1][2]	-AAA-020 *
0-25	.0037	[1][2]	-AAA-025 *
0-30	.0025	[1][2]	-AAA-030 *
0-50	.0015	[1][2]	-AAA-050 *

AC Ammeters – Iron vane: Self-contained, 60Hz nominal input (50-400Hz range)

0-1	.26	[1][2]	-AAC-001 **
0-1.5	.12	[1][2]	-AAC-0015 **
0-2	.07	[1][2]	-AAC-002 **
0-3	.048	[1][2]	-AAC-003 **
0-5	.022	[1][2]	-AAC-005 **
0-10	.005	[1][2]	-AAC-010 **
0-15	.003	[1][2]	-AAC-015 **
0-20	.002	[1][2]	-AAC-020 **
0-25	.002	[1][2]	-AAC-025 **
0-30	.0015	[1][2]	-AAC-030 **
0-50	.001	[1][2]	-AAC-050 **

ORDERING CODE GUIDE

[1] Insert Size Code:	CASE SIZE
1	1 1/2"
2	2 1/2"
3	3 1/2"
4	4 1/2"
5	5 1/2"

[2] Insert Model Code:

STYLE	
S	Surface Mount
W	Window Mount

AC Ammeters – Transformer rated, 0-5A, rectifier type

0-60	[1][2]	-AAAX-060 *
0-75	[1][2]	-AAAX-075 *
0-100	[1][2]	-AAAX-100 *
0-150	[1][2]	-AAAX-150 *
0-200	[1][2]	-AAAX-200 *
0-300	[1][2]	-AAAX-300 *
0-400	[1][2]	-AAAX-400 *
0-500	[1][2]	-AAAX-500 *
0-600	[1][2]	-AAAX-600 *
0-800	[1][2]	-AAAX-800 *
0-1000	[1][2]	-AAAX-1000 *
0-1500	[1][2]	-AAAX-1500 *
0-2000	[1][2]	-AAAX-2000 *

AC Ammeters – Iron vane: Transformer rated, 0-5A, 60Hz nominal input (50-400Hz range)

0-60	[1][2]	-AACX-060 **
0-75	[1][2]	-AACX-075 **
0-100	[1][2]	-AACX-100 **
0-150	[1][2]	-AACX-150 **
0-200	[1][2]	-AACX-200 **
0-300	[1][2]	-AACX-300 **
0-500	[1][2]	-AACX-500 **
0-600	[1][2]	-AACX-600 **
0-800	[1][2]	-AACX-800 **
0-1000	[1][2]	-AACX-1000 **
0-1500	[1][2]	-AACX-1500 **
0-2000	[1][2]	-AACX-2000 **

Frequency Meters – Pointer Type Electronic

45-65 Hz	120V	[1][2]	-FRQ-55/120-20 **
45-55	120	[1][2]	-FRQ-50/120-10 **
55-65	120	[1][2]	-FRQ-60/120-10 **
380-420	120	[1][2]	-FRQ-400/120-40 **
45-55	230	[1][2]	-FRQ-50/230-10 **
55-65	230	[1][2]	-FRQ-60/230-10 **

*not available in 1 1/2" size

**not available in 1 1/2" or 5 1/2" sizes