

## Weschler Analog Switchboard Meters

- High accuracy, full view design
- Volts, amps, watts, vars, speed, frequency and power factor
- High overload capacity
- Military and Nuclear versions
- Ultimate in reliability and performance
- Special scales and calibration
- Formerly **Westinghouse** brand

Type K-241 & 261 instruments are designed to achieve the ultimate in reliability and performance. These instruments are recommended for use on electric utility switchboards and industrial process control panels. Commercial instruments comply with ANSI Standard C39.1 for 1% class switchboard instruments. The Hi-Shock versions were developed to meet the special needs of U.S. Navy shipboard applications. They are also suitable for commercial, marine and industrial applications subjected to humid conditions or severe mechanical shocks.

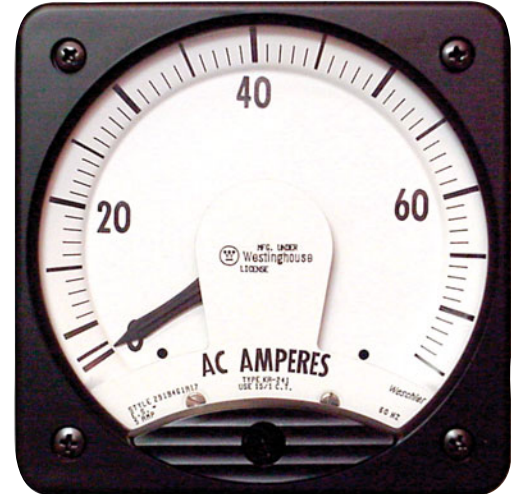
### TAUT-BAND SUSPENSION

Type K-241 & 261 instruments, except those which rotate continuously, use taut-band suspension. The taut-band suspension has unique advantages over the conventional pivot and jewel movement:

- It eliminates friction, giving better accuracy and almost perfect repeatability.
- It gives top performance under adverse conditions of shock and vibration.
- It reduces maintenance, thereby saving money throughout the lifetime of the instrument.
- It assures longer life, reducing annual depreciation and replacement costs.
- It has greater sensitivity, reducing power burdens on circuits being measured.

### FULL VIEW DESIGN

To facilitate quick, accurate reading, even under adverse conditions, all K-241 instruments feature the Westinghouse 'full view' 250° design. The window is flat, reducing light reflection to minimize the need for a non-glare surface. The dial scale is beveled for a 60° viewing angle.



▲ **KA241**

### MODIFICATIONS AVAILABLE

#### DIALS:

- Black
- Dual Scale
- Special Colors, Legends
- Weather resistant Cover

#### ELECTRICAL:

- Intermediate Ratings
- Special Calibrations
- Offset or Suppressed Zero
- Multiple Rating
- Special Sensitivity

### Types Available

Function	Ranges	Type Designation	Mechanism
DC Microammeter	50µA to 1mA	KX-241 Com & HI, 241 Com	Permanent-magnet moving coil
DC Milliammeter	1mA to 1A	KX-241 Com & HI, 241 Com	Permanent-magnet moving coil
DC Ammeter	1A to 50A	KX-241 Com & HI, 241 Com	Permanent-magnet moving coil
DC Millivoltmeter	50mV to 1V	KX-241 Com & HI, 241 Com	Permanent-magnet moving coil
DC Voltmeter	1V to 800V	KX-241 Com & HI, 241 Com	Permanent-magnet moving coil
AC Milliammeter	10mA to 1A	KA-241 Com & HI, 261 Com	Iron Vane
AC Ammeter	1A to 20A	KA-241 Com & HI, 261 Com	Iron Vane
AC Voltmeter	10V to 750V	KA-241 Com & HI, 261 Com	Iron Vane
AC Frequency	50, 60 & 400Hz	KX-241 Com & HI	With Separate Transducer
AC Frequency	50, 60 & 400Hz	KR3-241 Com	Self Contained Transducer
AC Frequency	395-405Hz	KR4-241 HI	Self Contained Transducer
AC Power Factor	0-1-0	KI-241 Com & HI, 261 Com	Rotating Vane
AC Power Factor	0.5-1-0.5	KJ-241 Com	Self Contained Transducer
AC Synchroscope	--	KI-241 Com & HI, 261 Com	Rotating Vane
AC Wattmeter	0.1 to 10A	KP-241 Com & HI, 261 Com & HI	Self Contained Transducer
AC Varmeter	0.1 to 10A	KP-241 Com & HI, 261 Com & HI	With External Phase Shifter
AC Varmeter	0.1 to 10A	KV-241 Com & HI, 261 Com & HI	Self Contained Transducer
Rectifier Milliammeter	1mA to 1A	KC-241 Com & HI, 261 Com	Permanent-magnet moving coil
Rectifier Ammeter	1A to 17A	KC-241 Com & HI, 261 Com	Permanent-magnet moving coil
Rectifier Voltmeter	5V to 600V	KC-241 Com & HI, 261 Com	Permanent-magnet moving coil
Resistance Thermometer	All Popular Ranges	KX-241 Com & HI, 261 Com	Self Contained Bridge
Speed Indicator	0-25, up to 13000pps	KX-241 Com & HI, 261 Com	Self Contained Transducer
Synchrotie	0-360°	KS-241 Com, Unmounted Transmitter	Self-Synchronous

See more information online at [weschler.com/analog](http://weschler.com/analog)