

Weschler Bargraph Meters

- Precise digital & vivid proportional (bar) display
- 101 segment single color bar, up to 10" high
- 3 1/2, 4 1/2 or 5 1/2 digit resolution
- Versatile selection of inputs
- Up to 6 form A or 4 form C relay outputs
- Peak/Valley option
- Analog retransmit option
- AC or DC power
- Rugged case

CONFIGURATION OPTIONS

SIZE		POWER	
BG252	6" Vertical BarGraph	120V AC 50/60Hz	
BH252	6" Horizontal BarGraph	240V AC 50/60Hz	
PC101	DIN Size Vertical BarGraph	5V DC	
PH101	DIN Size Horizontal BarGraph	12V DC	
PC202	DIN Size Dual BarGraph	24V DC	
PG101	Single BarGraph	28V DC	
PG202	Dual BarGraph	48V DC	
BI1251	6" Vertical BarGraph	125V DC	
BW1316	6" Vertical BarGraph	250V DC	
BV5A	7 1/2" Vertical BarGraph	120V AC / 125V DC	
BD101	10" Vertical BarGraph		
BG241	4 1/2" Square BarGraph		
BG261	8 1/2" Square BarGraph		
BG281	8" Circle BarGraph		
BG251	6" Circle BarGraph		

SETPOINTS		COMMUNICATION	
	Hi/Lo		RS232
	Hi/Hi-Hi		RS485
	Lo/Lo-Lo		Ethernet
	Hi-Hi/Hi/Lo/Lo-Lo		ModBus

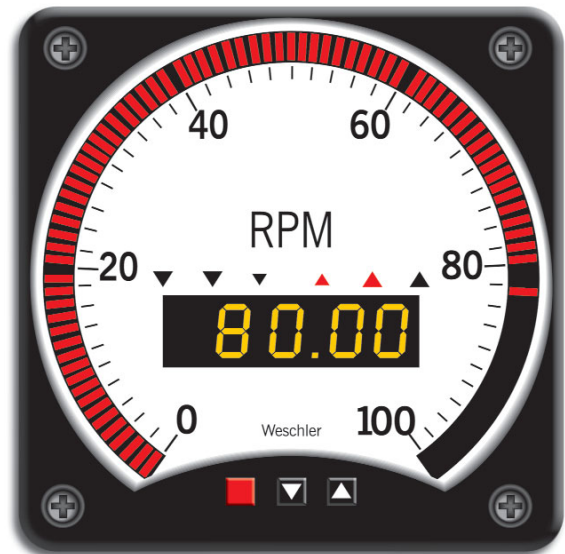
INPUT		RETRANSMIT	
DC Volts	50mV to 250V full scale		4-20mA
DC Amps	50µA to 5A full scale		0-1mA
AC Volts RMS	50mV to 250V full scale		1-5V DC
AC Amps RMS	1mA to 5A full scale		0-1V DC
Process	4-20mA DC		10-50mA DC
	1-5V DC		Excitation Power 24 VDC
	10-50mA DC		
Line Frequency	55-65 Hz		
MAG Pickup	50Hz-20kHz		
Thermocouple	J, K or T		
RTD	100 ohm Pt or 10 ohm Cu		
Watts	single & polyphase		
VARs			
Power Factor			

LED COLOR	
	Green
	Amber
	Red

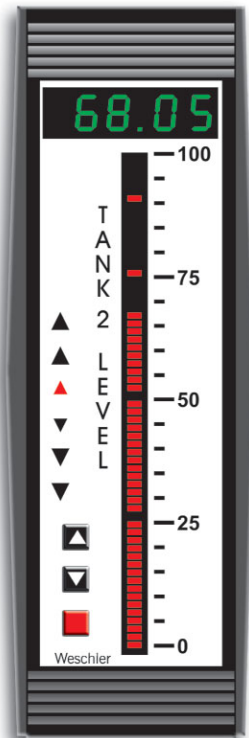
BAR COLOR	
	Green
	Amber
	Red

Over 10,000 combinations available.

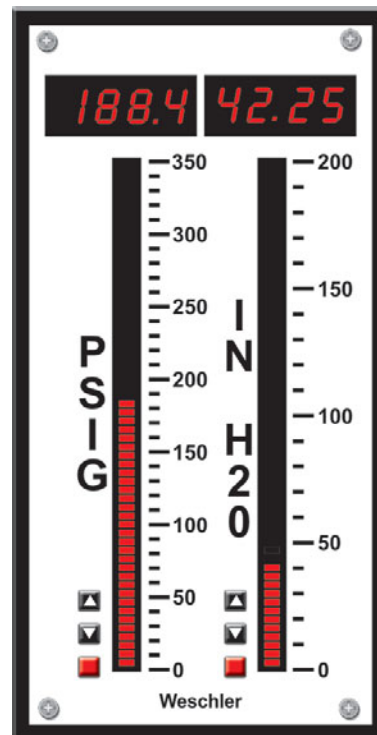
For more information see weschler.com/bargraph



BG241



BG252



PC202