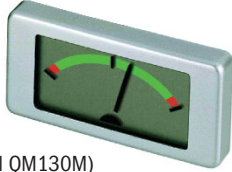


Lascar Quick Mount LCD Panel Meters (formerly Martel)

EMA 1710 Wiper Type

- 9 Segment LCD
- Color Scale



(Martel QM130M)

Input:	0-1 VDC
Resolution:	125 mVDC
Supply:	5-12 VDC @ 1.5 mA

EMV 1200-40 2-Wire Voltage

- Monitoring System Voltage
- Powered from Measured Signal
- Reverse Polarity Protected



(Martel QM100V40)

Input:	4.0-40.0 VDC
Accuracy:	0.4V ± 1 count
Max:	50 VDC @ 3 mA

EMV 1125 Voltage/Current

- 200 mV Full Scale
- Auto-zero, Auto-polarity
- Optional Ranging Board



(Martel QM140V)

Ranges:	200mV, 2V, 20V, 200µa, 2ma, 20ma, 200ma
Accuracy:	0.05% ± 1 count
Supply:	7.5-15 VDC @ 150 µA

EMC 1500 Elapsed Time

- 9999.9 and 99999 Hour Ranges
- Reset & Trip/Total Inputs
- Pulse Output every 100 Hours



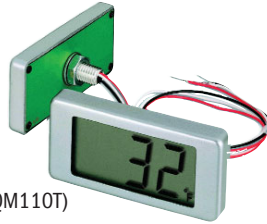
(Martel QM120C)

Supply:	5-27 VDC @ 2.5 µA
---------	-------------------

 DIGITAL
METERS

EMT 1900 Temperature

- Readout in Degrees C or F
- Reads Internal Sensor or External 10kΩ NTC Thermistor



(Martel QM110T)

	Internal Sensor	External Sensor
Range:	-10 to +50°C -14 to +122°C	-20 to 220°C -4 to +428°F
Resolution:	0.5°	1°
Supply	4-28 VDC	4-28 VDC

SPECIFICATIONS FOR ALL METERS

Sample Rate:	3 sec.
Character Height:	0.5" (12.5mm) except 0.35" (9mm) on QM120C
Operating Temperature:	0-50°C
Dimensions (W x H):	1.71" x 0.84" (43.0 x 21.4 mm)
Mounting:	7/32" (5.5 mm) hole
Sealing:	IP65 Front

Yokogawa Loop Powered Indicators

- Explosion-Proof NEMA 4X Case
- Analog and Digital Models
- FM and CSA Approved Versions
- Wall Mount or 2" Pipe Mount

**Obsolete - call for
suitable replacement**

MLD ▶



SPECIFICATIONS

Input Resistance:	100Ω (MLD 4-20mA) < 6.5Ω (MLA 4-20mA) < 13.5Ω (MLA 10-50mA) ≈ 4kΩ (MLA 1-5V)
Standard Scale:	0-100.0% (MLD) 0-100% (MLA)
Accuracy:	±0.05% of full scale [1999] ±1 digit (MLD) ±1.5% of full scale (MLA)
Operating Temperature:	0 to 60°C (MLD), -20 to 60°C (MLA)
Electrical Classification:	FM, CSA, EXPLOSIONPROOF CL1, DIV1, GPS A,B,C,D, DUST-IGNITIONPROOF CLII / III, GPS E,F,G
Case and Cover:	Die cast aluminum, baked polyurethane paint. Dark green; NEMA 4X
Electrical Connection:	1/2" NPT

For special analog scale, add /SC to catalog number and describe (i.e. 0-300 PSI). For special digital readout, add /ENG to catalog number and describe (i.e. 50.0-150.0 GPM).

ORDERING INFORMATION

A	B	C	D	E	Example: MLD-A2/FF1/WHT
A Model					
MLA		Loop Indicator (Analog)			
MLD		Loop Indicator (Digital)			
B Input Signal					
-A		4 to 20 mA DC			
-B		10 to 50 mA DC (MLA only)			
-C		1 to 5 VDC (MLA only)			
C Mounting					
1		2" Horizontal Pipe			
2		2" Vertical Pipe (or wall mount)			
D Electrical Class					
/FF1		FM Explosion Proof			
/CF1		CSA Explosion Proof			
E Options					
/ WHT White scale or face plate					
/ ENG Engineering Unit Calibration (MLD Only)					
/ SC Scale in Engineering Units (MLA Only)					
/ SST Stainless Steel Tag -Up to 8 Characters					