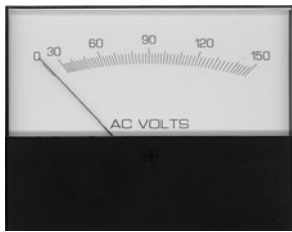


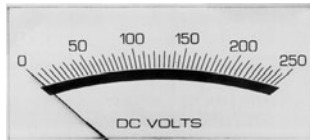
Jewell DC Current & Voltage Meters

Modutec S & W Series

- Five Display Sizes: 1 1/2", 2 1/2", 3 1/2", 4 1/2" and 5 1/2"
- Shielded Taut-Band Movement
- Surface-Mount or Window-Mount Models



S Series



W Series

ORDERING INFORMATION

Use Ordering Code Guide to complete Part #. Insert Size Code in box 1 and Model Code in box 2.

DC Millivoltmeters - Zero left, 200Ω/V

0-50	1 2	-DMV-050
0-100	1 2	-DMV-100

DC Millivoltmeters - Zero center, 200Ω/V

50-0-50	1 2	-DMV-50U50
100-0-100	1 2	-DMV-1H1

DC Voltmeters - Zero left, 1000Ω/V, except *10kΩ/V

0-1	1 2	-DVV-001
0-1.5	1 2	-DVV-0015
0-2	1 2	-DVV-002
0-3	1 2	-DVV-003
0-5	1 2	-DVV-005
0-10	1 2	-DVV-010
0-15	1 2	-DVV-015
0-20	1 2	-DVV-020
0-25	1 2	-DVV-025
0-30	1 2	-DVV-030
0-40	1 2	-DVV-040
0-50	1 2	-DVV-050
0-75	1 2	-DVV-075
0-80	1 2	-DVV-080
0-100	1 2	-DVV-100
0-150	1 2	-DVV-150
0-200	1 2	-DVV-200
0-250	1 2	-DVV-250
0-300	1 2	-DVV-300
0-500	1 2	-DVV-500
0-600	1 2	-DVV-600 *
0-750	1 2	-DVV-750 *
0-1000	1 2	-DVV-1000 *

DC Voltmeters - Zero center, 1000Ω/V, except *10kΩ/V

5-0-5	1 2	-DVV-5U5
10-0-10	1 2	-DVV-10U10
15-0-15	1 2	-DVV-15U15
25-0-25	1 2	-DVV-25U25
50-0-50	1 2	-DVV-50U50
100-0-100	1 2	-DVV-1H1
150-0-150	1 2	-DVV-1.5H1.5
300-0-300	1 2	-DVV-3H3
500-0-500	1 2	-DVV-5H5
600-0-600	1 2	-DVV-6H6 *

SPECIFICATIONS

Model	W Series				
Case Size	1 1/2"	2 1/2"	3 1/2"	4 1/2"	5 1/2"
Size (H x W x D)	1.77 x 2.26 x 1.83"	2.29 x 3.01 x 2.10"	2.90 x 3.73 x 2.12"	4.06 x 5.18 x 2.17"	4.60 x 5.97 x 2.17"
Window (cutout)	0.935 x 2.15"	1.27 x 2.90"	1.595 x 3.61"	2.345 x 5.02"	2.59 x 5.78"
Model	S Series				
Case Size	1 1/2"	2 1/2"	3 1/2"	4 1/2"	5 1/2"
Size (H x W x D)	1.75 x 2.24 x 1.55"	2.27 x 2.99 x 1.80"	2.87 x 3.70 x 1.80"	3.96 x 5.10 x 1.80"	4.48 x 5.85 x 1.80"
Barrel (cutout)	1.55"	2.22"	2.82"	2.82"	2.82"
All Models:					
Scale Length	1.75"	2.41"	3.0"	4.22"	5.12"
Accuracy	±2% of full scale				
Repeatability	±0.5% of full scale				
Response Time	1.5 sec. (except 3 sec. for $\leq 50\mu A$ full scale)				

ORDERING INFORMATION

DC Microammeters - Zero left		
0-50	2600	1 2 -DUA-050
0-100	640	1 2 -DUA-100
0-200	220	1 2 -DUA-200
0-500	135	1 2 -DUA-500
DC Microammeters - Zero center		
25-0-25	2600	1 2 -DUA-25U25
50-0-50	640	1 2 -DUA-50U50
100-0-100	230	1 2 -DUA-1H1
500-0-500	35	1 2 -DUA-5H5
DC Milliammeters - Zero left		
0-1	35.0	1 2 -DMA-001
0-2	12.5	1 2 -DMA-002
0-3	7.2	1 2 -DMA-003
0-5	3.8	1 2 -DMA-005
0-10	2.2	1 2 -DMA-010
0-15	3.3	1 2 -DMA-015
0-20	2.5	1 2 -DMA-020
0-25	2.0	1 2 -DMA-025
0-30	1.7	1 2 -DMA-030
0-50	1.0	1 2 -DMA-050
0-100	.50	1 2 -DMA-100
0-150	.33	1 2 -DMA-150
0-200	.25	1 2 -DMA-200
0-300	.166	1 2 -DMA-300
0-500	.10	1 2 -DMA-500
0-750	.066	1 2 -DMA-750
DC Milliammeters - Zero center		
1-0-1	35.0	1 2 -DMA-1U1
5-0-5	3.5	1 2 -DMA-5U5
10-0-10	2.2	1 2 -DMA-10U10
25-0-25	2.0	1 2 -DMA-25U25
50-0-50	1.0	1 2 -DMA-50U50
100-0-100	.50	1 2 -DMA-1H1
200-0-200	.25	1 2 -DMA-2H2
500-0-500	.10	1 2 -DMA-5H5
DC Ammeters - Zero left, self-contained		
0-1	.050	1 2 -DAA-001
0-1.5	.033	1 2 -DAA-001.5
0-2	.025	1 2 -DAA-002
0-3	.0166	1 2 -DAA-003
0-5	.010	1 2 -DAA-005
0-10	.0050	1 2 -DAA-010
0-15	.0033	1 2 -DAA-015 **
0-20	.0025	1 2 -DAA-020 **
0-25	.0020	1 2 -DAA-025 **
0-30	.0015	1 2 -DAA-030 **
0-50	.0010	1 2 -DAA-050 **
DC Ammeters - Zero center, self contained		
1-0-1	.050	1 2 -DAA-1U1
3-0-3	.016	1 2 -DAA-3U3
5-0-5	.010	1 2 -DAA-5U5
10-0-10	.005	1 2 -DAA-10U10
15-0-15	.003	1 2 -DAA-15U15 **
25-0-25	.002	1 2 -DAA-25U25 **
50-0-50	.001	1 2 -DAA-50U50 **

ORDERING CODE GUIDE

1	Insert Size Code:	CASE SIZE
1		1 1/2"
2		2 1/2"
3		3 1/2"
4		4 1/2"
5		5 1/2"
2	Insert Model Code:	STYLE
S		Surface Mount
W		Window Mount

OPTIONS

Custom Scaling	Color Bands
Mirror Scale	Illumination
High Torque Movement	Sealed Case
Suppressed Zero	Bezel Mount Kit

ORDERING INFORMATION

DC Ammeters - Zero left, 50mV, shunt rated	
0-75	1 2 -DAA-075
0-100	1 2 -DAA-100
0-150	1 2 -DAA-150
0-200	1 2 -DAA-200
0-300	1 2 -DAA-300
0-500	1 2 -DAA-500
0-750	1 2 -DAA-750
0-1000	1 2 -DAA-1000
0-1200	1 2 -DAA-1200
0-1500	1 2 -DAA-1500
0-2000	1 2 -DAA-2000
DC Ammeters - Zero left, 100mV, shunt rated	
0-75	E 1 2 -DAA-075
0-100	E 1 2 -DAA-100
0-150	E 1 2 -DAA-150
0-200	E 1 2 -DAA-200
0-300	E 1 2 -DAA-300
0-500	E 1 2 -DAA-500
0-750	E 1 2 -DAA-750
0-1000	E 1 2 -DAA-1000
0-1200	E 1 2 -DAA-1200
0-1500	E 1 2 -DAA-1500
0-2000	E 1 2 -DAA-2000
DC Ammeters - Zero center, 50mV, shunt rated	
75-0-75	1 2 -DAA-75U75
100-0-100	1 2 -DAA-1H1
200-0-200	1 2 -DAA-2H2
300-0-300	1 2 -DAA-3H3
400-0-400	1 2 -DAA-4H4
500-0-500	1 2 -DAA-5H5

** not available in 1 1/2" size