

## Red Lion Dual Display Panel Meter

- Universal Process Inputs, DC Current, DC Voltage, Process Signals, Resistance, Thermocouples or RTDs
- Wide Range Power Supply: 50–250 VAC & 21.6–250 VDC
- 6/9 Digit Dual Line/Multi-Color Display with 0.7" and 0.35" digits
- Variable Contrast and Intensity Display
- Meter Update Rate up to 160/Second
- Up to Four Setpoint Relays
- Retransmitted Analog Output
- Built-in USB port & Modbus Protocol
- R232 & RS485 Optional

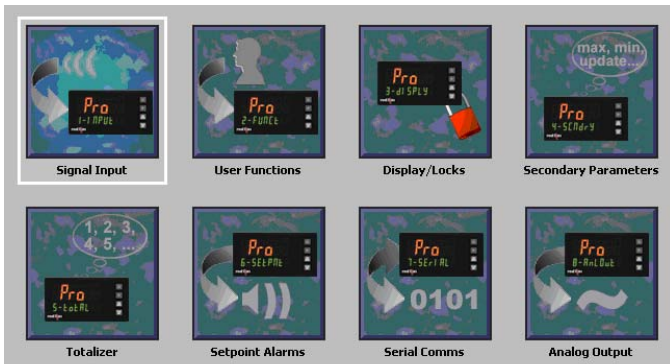



The PAX2A is packed full of features that set it apart from other panel meters. The input, total, min., max. or setpoint value can be displayed on the 0.7" high 6-digit main LCD display. The main display also offers three programmable, easy-to-read colors: red, orange and green. The color change can be tied to the setpoints, providing the operator with a visual display of changing conditions in the application. A second display line is a 0.35" high, green LCD that can be programmed for any of the above parameters as well. This 9-digit display accommodates totalizing applications that easily exceed the normal 6-digit displays. In addition to the dual displays, the meter also includes a 3-character programmable unit indicator.

Beyond the display, the PAX2A provides the maximum in configuration flexibility, allowing users to stock just one meter for numerous applications. Featuring universal input, the same meter accepts DC current, DC voltage, process signal, plus thermocouple and RTD temperature sensor inputs. The PAX2A also has a wide range AC/DC power input.

With its dual display and versatile functionality, the PAX2A delivers an ideal solution for applications that require two parameters to be visualized at the same time (e.g. present temperature and setpoint value or flow rate and total gallons).

The Crimson 2 setup software allows quick and easy configuration of the meter from any PC, using the supplied USB cable.



### SPECIFICATIONS

Display:	Positive image LCD
Top Line:	6 digit, 0.71" (18 mm) tri-color backlight (red/green/orange) -199,999 to 999,999 display range
Bottom Line:	9 digit, 0.35" (8.9 mm) green backlight -199,999,999 to 999,999,999 display range
Power:	50 to 250 VAC, 50/60 Hz, 14 VA 21.6 to 250 VDC, 8 W
Annunciators:	4 red 'setpoint active' indicators
Units Label:	3 programmable characters with tri-color backlight
Keypad:	2 programmable function keys, 4 keys total
A/D Converter:	24 bit resolution, conversion rate programmable from 5 to 160 readings/sec.
Input:	Multi-function, user selectable
Current:	± 250 µADC, ± 2.5 mADC, ± 25 mADC, ± 250 mADC, ± 2 ADC
Voltage:	± 250 mVDC, ± 2.0 VDC, ± 10 VDC, ± 25 VDC, ± 100 ADC, ± 200 VDC
Thermocouple:	T, E, J, K, R, S, B, N, and C
RTD:	100Ω Pt (α= 0.00385 & 0.00392), 120Ω Nickel (α= 0.00672), 10Ω Copper (α= 0.00427)
Resistance:	100Ω, 1000Ω, 10kΩ
Excitation Power:	Jumper selectable Transmitter Power: +18 VDC @ 50mA Reference Voltage: +2 VDC, +/- 2% Reference Current: 1 mADC, +/- 2%
Totalizer:	
Time Base:	Second, minute, hour or day
Batch:	Can accumulate (gate) input display from a user input
Time Accuracy:	0.01% typical
Decimal Point:	0 to 0.0000
Scale Factor:	0.001 to 65.000
Low Signal Cut-out:	-19,999 to 99,999
Total:	9 digits (main display alternates between high order and low order readouts)
Custom Linearization:	
Data Point Pairs:	Selectable from 2 to 16
Display Range:	-19,999 to 99,999
Decimal Point:	0 to 0.0000
Compensation:	User value 0.00 to 650.00 µV/C (for ice point)
Memory:	Non-volatile E2PROM memory retains all programmable parameters and display values
User Inputs:	Two programmable user inputs
Operating Temp:	0 to 50°C, 85% RH max. (non-condensing) (0 to 45°C with all three plug-in cards installed)
Connections:	High compression cage-clamp terminal block
Case:	1/8 DIN, rated for NEMA 4X/IP65 indoor use; IP20 Touch safe; Installation Category II, Pollution Degree 2
Construction:	Flame resistant, one piece bezel/case with synthetic rubber keypad
Dimensions:	1.95" H x 3.80" W x 4.24" D (50x97x108mm)

### ORDERING INFORMATION

PAX2A Dual Display Process Meter  
(USB cable, panel gasket and mounting clip included)

#### Plug-In Options: \*

PAXCDS10	Dual Form C Setpoint Relays (5 A @ 240 VAC or 28 VDC res.)
PAXCDS20	4 Form A Setpoint Relays (3 A @ 250 VAC or 30 VDC res.)
PAXCDS30	4 Setpoint Sinking Open Collector Outputs (0.1 A @ 50V)
PAXCDS40	4 Setpoint Sourcing Open Collector Outputs (0.1 A @ 30V)
PAXCDL10	Analog Output Card (0-20/4-20 mA, 0-10 VDC)
PAXCDC10	RS485 Serial Communications Card with Terminal Block
PAXCDC1C	Extended RS485 Card with Dual RJ11 Connector
PAXCDC20	RS232 Serial Communications Card with Terminal Block
PAXCDC2C	Extended RS232 Card with 9 Pin D Connector
PAXCDC30	DeviceNet Communications Card

\*order PAX2A-ASSY for factory installation of options & meter setup. Crimson 2 software is a free download from the Red Lion website.