

## Weschler Tri-Color Bargraph Meters

- Large, bright display with 16 step dimming
- 40, 50 or 100 segment Tri-Color Bar
- Bar changes color at user adjustable setpoints – Red, Green, Amber
- 5 or 6 digit resolution
- Versatile selection of inputs
- Up to 6 form A or 4 form C relay outputs
- Peak/Valley option
- RS232, RS485 & Ethernet Communications
- Analog retransmit option
- AC or DC power
- Rugged case

Sizes to replace popular edgewise and circular analog meters.

### CONFIGURATION OPTIONS

#### SIZE

BG252	6" Vertical BarGraph
BH252	6" Horizontal BarGraph
BV5A	7 1/2" Vertical BarGraph
BD101	10" Vertical BarGraph
BG241	4 1/2" Square BarGraph
BG261	8 1/2" Square BarGraph
BG281	8" Circle BarGraph

#### INPUT

DC Volts	50mV to 250V full scale
DC Amps	50µA to 5A full scale
AC Volts RMS	50mV to 250V full scale
AC Amps RMS	1mA to 5A full scale
Process	4-20mA DC
	1-5V DC
	10-50mA DC
Line Frequency	55-65 Hz
MAG Pickup	50Hz-20kHz
Thermocouple	J, K or T
RTD	100 ohm Pt or 10 ohm Cu
Watts	Single & polyphase
VARs	
Power Factor	

#### POWER

120V AC 50/60Hz
240V AC 50/60Hz
12V DC
24V DC
28V DC
48V DC
125V DC
250V DC
120V AC / 125V DC

#### COMMUNICATION

RS232
RS485
Ethernet
ModBus

#### RETRANSMIT

4-20mA
0-1mA
1-5V DC
0-1V DC
10-50mA DC
Excitation Power 24 VDC

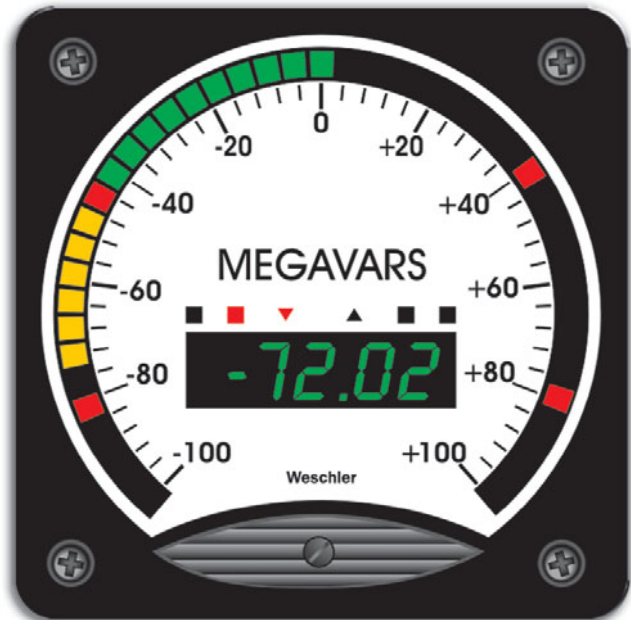
#### DIGITAL DISPLAY COLOR

Green
Amber
Red

Over 10,000 combinations available.

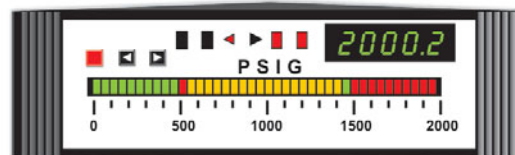
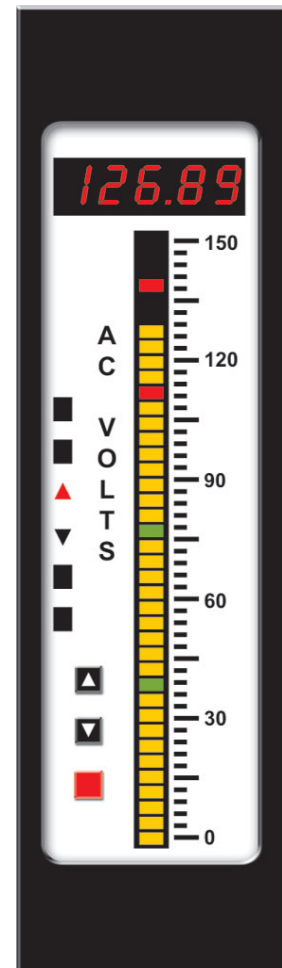
### FIELD PROGRAMMABLE FUNCTIONS

- Zero and full scale point location
- Setpoint type (Hi or Low)
- Hysteresis & latching
- Setpoint time delay
- 16 step dimming
- Digital display for engineering units
- Enable/disable front buttons
- I.D. selection for communication
- Bar form
- Peak / Valley enable
- Color zones
- Over / Under range, flashing
- Lamp test



**BG261TC**

**BD101TC**



**BH252TC**

More information online at [weschler.com/bargraph](http://weschler.com/bargraph)